

Wheelchair Beach Conversion Kit
 (WZ1-WC-ATC-30/42/49)
INSTRUCTION SHEET



PARTS

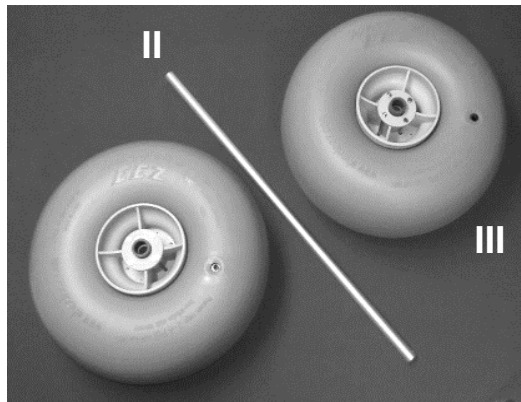
I. HARDWARE

- a. Axle Brackets [2]
- b. U-Bolts [8]
25.4 x 6mm (1 x 1/4")
- c. U-Bolts [8]
20 x 6mm (13/16 x 1/4")
- d. Flat Washers [16]
6mm (1/4")
- e. Nylock Nuts [16]
6mm (1/4")
- f. Quick Clip Pins [4]
- g. Spacer [1]
25.4mm x 15cm (1 x 5")



II. AXLE

- WZ4-AL254-1070 [1]
25.4mm x 107cm (1 x 42") axle



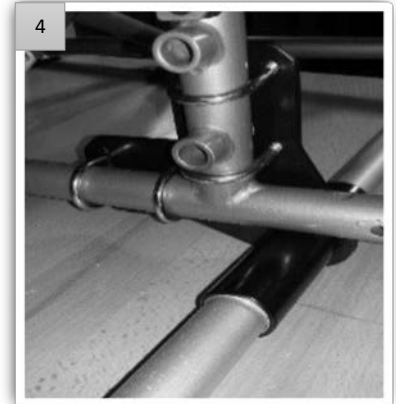
III. BALLOON WHEELS

- WZ1-30UC [2] or
- WZ1-42UC [2] or
- WZ1-49UC [2]

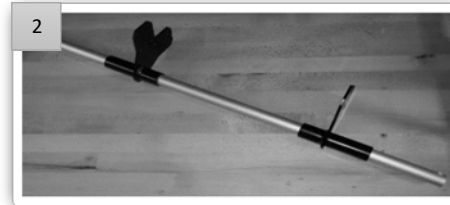
DIRECTIONS



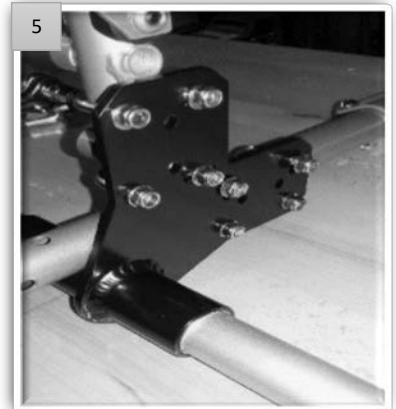
Remove stock wheels from the chair.



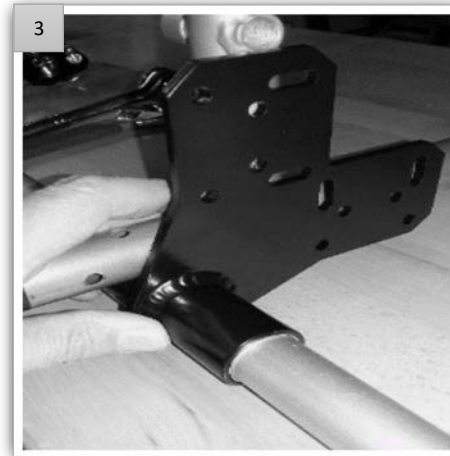
Install U-Bolts (b or c depending on frame tube diameter).



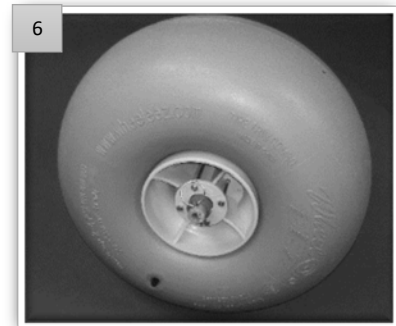
Position axle brackets (a) on axle.



Install washers (d) and nylock nuts (e). Cut Spacer (g) length to accommodate either 30cm or 42/49cm wheels.



Align axle brackets with chair frame vertical and horizontal members.



Install wheels on axle, secure with Quick Clip Pins (f).