



ONE FOOT,  
MULTIPLE POSSIBILITIES,  
INFINITE EMOTIONS

**BIOSTEP**™

Powered with patented **NRG**™ Technology

ALPS



ALPS BioStep™ range is a breakthrough innovation among dynamic response feet. Active users can experience a high dynamic response combined with a fluid step and stability on all terrains.

ALPS BioStep™ powered with patented NRG™ technology is based on a biomimetic design, enabling dynamic patients to perform a wide range of activities with just one single foot.

## NRG™ Technology

Inspired by Nature, Empowered by Technology

NRG™ - Natural Reactive Gait - is a patented innovative dynamic response foot technology designed to replicate the natural movement of the calf and shin muscles.



Fluid step with a continuous dynamic response



# BIOSTEP AT A GLANCE

With NRG™  
Technology



**BIOSTEP EVO**  
Ready for the next adventure

With NRG™  
Technology



**BIOSTEP PRO**  
Do that extra mile!

With NRG™  
Technology

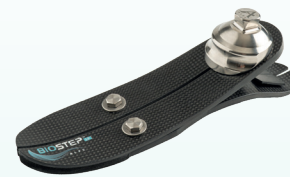


**BIOSTEP CL**  
Your everyday companion

With NRG™  
Technology



**BIOSTEP XT**  
The relentless energy



**BIOSTEP LP**  
Low build height for a great freedom



Multilayer



Split-toe



Dynamic  
Calf & Shin



Axial rotation



Range of  
motion



Firm/Solid  
Connection



Increased Shock  
Absorption

# KEY FEATURES

A patented innovative dynamic response foot technology designed to replicate the natural movement of the calf and shin muscles.

## NRG™ = Natural Reactive Gait

- **Natural:** physiological motion  
ALPS NRG™ technology mimics the natural action of the muscles (biometric design).
- **Reactive Gait:** dynamic response is enhanced and maintained throughout the whole gait cycle.



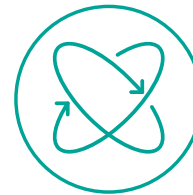
Unique multi-layer construction



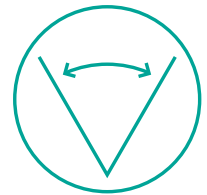
Exclusive and patented reverse shank design



Advanced flexible ergonomic design



Axial rotation



Wide range of motion

# KEY BENEFITS



Physiological and energy efficient gait



Smooth rollover during the whole gait cycle



High dynamic response to support an active lifestyle



Possibility to do a wide range of activities with just one single foot



Ground compliance and stability on all terrains



Reduction of secondary issues thanks to a more balanced posture and symmetrical gait



Low maintenance



Lightweight



# ALPS BIOSTEP FAMILY

With NRG™  
Technology



## BIOSTEP EVO

Ready for the next adventure

The most performing among the BioStep Family. An all-around foot, with extra shock absorption and increased safety on all terrains, providing a softer connection to the ground. Suggested for demanding dynamic users searching for the best. Ideal also for hiking and trekking, as well for recreational sport and high impact activities.

**Natural, responsive, gently supportive**

Model	BSEVO
Activity level	(K2) K3 K4
Build height	17 cm
User weight	147 Kg
Range of motion	12° Inv/Ev 26° PF/DF 12° Transverse

With NRG™  
Technology



## BIOSTEP PRO

Do that extra mile!

All benefits of the NRG™ Technology with enhanced torsional movement. Suggested for Active outdoor patients who prefer a firm connection to the ground and the added benefits of torsion. Also for occasional and recreational sport activities.

**Natural, comfortable, responsive**

Model	BSPRO
Activity level	(K2) K3 K4
Build height	15 cm
User weight	183 Kg
Range of motion	6° Inv/Ev 26° PF/DF 12° Transverse



# ALPS BIOSTEP FAMILY

With NRG™  
Technology



## BIOSTEP CL

Your everyday companion

Our classic foot with all benefits of the NRG™ Technology providing a firm connection to the ground. Suggested for urban walkers and aggressive walkers searching for a strong, durable and comfortable dynamic response foot.

**Natural and responsive**

With NRG™  
Technology



## BIOSTEP XT

The relentless energy

Maximum energy storage and return for the most demanding patients. Suggested for high impact activities requiring torsional movement and for occasional sport activities.

**Natural, comfortable, extremely responsive**



## BIOSTEP LP

Low build height for a great freedom

The ideal solution for active users with long residual limbs. It provides secure contact with the ground, as well as responsive action and ground compliance. Suggested for medium and high mobility users with long residual limbs, who want a responsive, all-around foot.

**Responsive with low height**

Model	BSCL
Activity level	(K2) K3 K4
Build height	15 cm
User weight	183 Kg
Range of motion	6° Inv/Ev 26° PF/DF 9° Transverse

Model	BSXT
Activity level	(K2) K3 K4
Build height	18,5 cm
User weight	140 Kg
Range of motion	6° Inv/Ev 26° PF/DF 16° Transverse

Model	BSLP
Activity level	(K2) K3 K4
Build height	6,8 cm
User weight	147 Kg
Range of motion	12° Inv/Ev 20° PF/DF

How to order:




Online product selector



Order from email



Call Us!

A person wearing a black long-sleeved shirt and brown pants is holding a basketball with both hands. They are wearing a prosthetic right leg and a black athletic shoe. The background shows an outdoor basketball court with a green fence and a building in the distance.

ALPS is a US manufacturer of medical devices since 1989; registered with the US Food and Drugs Administration.

ALPS has focused for almost 30 years in designing and manufacturing only high-quality prosthetic liners to provide people all the mobility they need. Thanks to its expertise ALPS is now proud to launch BioStep a new line of feet featuring a cutting-edge technology to improve people daily life.

ALPS Making Lives Better.

