

Breezy Style X Ultra



Status: 01_2021
Rev: 01_2021

ORDER FORM

Errors and imissions excepted.

| Billing Address Or Customer-ID | | | Shipping Address | Identical To Billing Address |
|--------------------------------|-------------|-------------------------|-------------------------------------|------------------------------|
| C.-ID: | | | C.-ID: | |
| Name: | | | Name: | |
| Street: | | | Street: | |
| Town/PC: | | | Town/PC: | |
| E-Mail: | | | E-Mail: | |
| Phone: | | | Phone: | |
| Order Information | | | User Weight | |
| Order | Calculation | Built-4-Me [®] | User Weight Capacity: 125 kg | |
| Purchase Order No.: | | | User Weight: kg | |
| Art. No.: 08000001 | | Reimbursement Code: xxx | Base Price € X.XXX,- | |
| Order Date: | Day | Month | | |

Please follow this measuring method:

The following method is recommended on the basis of extensive practical experience. Deviations are possible in individual instances.

Seat Width (SW):

- a) For the user: Allow space between sideguard and hip on each side of the chair (approx. 10-20 mm altogether).
- b) On the wheelchair: From outside frame tube to outside frame tube.

Seat Depth (SD):

- a) For the user: When sitting upright: leave space for 2-3 fingers between front edge of the seat upholstery and back of knee (approx. 30-60 mm). Care must taken with adj. upholstery.
- b) On the wheelchair: From back tube to front seat upholstery.

Front Seat Height:

- a) For the user: When sitting with 90°knee angle: from back of knee to bottom of shoe sole.
- b) On the wheelchair: From front of seat tube to the ground. Min. 30 mm longer than user measurement. Remember to include the cushion height.

Rear Seat Height:

On the Wheelchair: From back of seat tube to the ground.

Note: Max. seat height difference rear to front is 110 mm

Back Height:

- a) For the user: From the seat, including cushion, to be no more than 10-20 mm below the lower shoulder blade.
- b) On the wheelchair: From back of seat tube to upper edge of backrest upholstery.

Note: The user's ability to sit upright has a major influence on the back height and it can therefore differ considerably

Back angle:

Important: The back height depends on the degree of disability. 0° is the angle 90° to the seat. Negative angles are <90° and positive angles are >90°.

Centre of Gravity:

On the wheelchair: From the back tube to the middle of the axle plate.

Technical Data

| | |
|-----------------------------|--------------|
| Max. Overall Height: | 995 mm |
| Max. Overall Length: | 1140 mm |
| Overall Width: | SW + 180 mm |
| Weight: | from 13.8 kg |

Product is crash tested according to ISO 7176-19 and therefore approved for transportation in a vehicle in combination with crash test option. For transport without a user, fix the chair safely in the vehicle (e.g. car or plane).

| Seat Width | | | | | | |
|------------|------|-------|------|-------|------|------|
| | SW38 | SW405 | SW43 | SW455 | SW48 | SW52 |
| mm | 380 | 405 | 430 | 455 | 480 | 520 |

| Seat Depth | | | | | | |
|------------|------|-------|------|--|--|--|
| | SD41 | SD435 | SD46 | | | |
| mm | 410 | 435 | 460 | | | |

| Front Seat Height (mm) (All this options are with 3° seat angle) | | | | | | |
|--|--------|-------|--------|-------|--------|-------|
| | FSH385 | FSH41 | FSH435 | FSH46 | FSH485 | FSH51 |
| mm | 385 | 410 | 435 | 460 | 485 | 510 |
| 5" / 12" | - | - | - | | | - |
| 6" / 12" | - | - | - | | | |
| 8" / 12" | - | - | - | | | |
| 5" / 22" | | | | | | |
| 6" / 22" | - | | | | | |
| 8" / 22" | - | - | | | | |
| 5" / 24" | - | | | | | - |
| 6" / 24" | - | | | | | |
| 8" / 24" | - | - | - | | | |

| Cross Brace | | | € |
|-------------|-------------------|--|-------|
| BRU010025 | 2 arm cross brace | | std- |
| BRU010026 | 3 arm cross brace | | XXX,- |

| Seat | | | € |
|--|--|--|-------|
| Seat Upholstery | | | |
| BRU020065 | Seat sling, Nylon, padded, black | | std- |
| Cushion | | | |
| BRU020066 | Seat cushion, foam (medium soft), cover black, 50 mm | | XXX,- |
| JAY Cushions (For complete product range see JAY order forms) | | | |
| JAY020002 | JAY Basic cushion | | XXX,- |
| JAY020003 | JAY Soft Combi P cushion | | XXX,- |
| JAY020001 | JAY Easy Visco, curved base | | XXX,- |
| JAY020007 | JAY Easy Fluid, curved base | | XXX,- |

| Backrest | | | | | | | € |
|----------------------|--|------------------------------|------------------------------|--------------|--------------|-------------|-------|
| Backrest Type | | | | | | | |
| BRU030122 | Backrest, fixed, push handles long, lumbar curve 10° | | | | | | std- |
| | 375 - 425 mm | | | 400 - 450 mm | | | |
| | BH375 | BH40 | BH425 | BH40 | BH425 | BH45 | |
| | 375 | 400 | 425 | 400 | 425 | 450 | |
| BRU030061 | Backrest, fixed, 90°, push handles long | | | | | | - |
| | 400 - 450 mm | | | | | | |
| | BH40 | BH425 | BH45 | | | | |
| | <input type="checkbox"/> 400 | <input type="checkbox"/> 425 | <input type="checkbox"/> 450 | | | | |
| BRU030101 | Backrest, half-folding (to the back) (1) | | | | | | XXX,- |
| | 400 - 450 mm | | | | | | |
| | BH40 | BH425 | BH45 | | | | |
| | 400 | 425 | 450 | | | | |
| BRU030014 | Backrest, recline (0° - 30°), push handles long (2) | | | | | | XXX,- |

(1) Back height 450 mm, adjustable to 400 and 425 mm

(2) Standard: BH 480 mm, height-adj. armrest, stabilizer bar and anti-tip tubes required

(3) Not available with half-folding backrest, not with drum brakes, standard with reclining backrest

(4) Not available with half-folding backrest, not with drum brakes

JAY Cushions



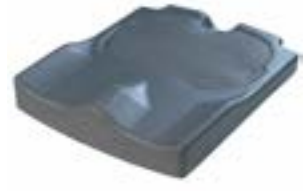
// BRU020066 Seat cushion, foam (medium soft), cover black, 50 mm



// JAY020002 JAY Basic Cushion (without cover)



// JAY020003 JAY Soft Combi P Cushion (without cover)



// JAY020001 JAY Easy Visco Cushion (without cover)

Cross Brace



// BRU010025 2 arm cross brace



// BRU010026 3 arm cross brace

Backrest



// BRU030122 Backrest, fixed, push handles long, lumbar curve 10°



// BRU030101 Backrest, half-folding



// BRU030014 Backrest, recline (0° - 30°), push handles long

Backrest Accessories



// BRU030401 Stabilizer bar, swing away



// BRU030080 Headrest, Skay, height- and angle-adjustable, 260 x 130 mm

Backrest Accessories

| | | |
|-----------|--|-------|
| BRU030401 | Stabilizer bar, swing away (3) | XXX,- |
| BRU030080 | Headrest, Skay, height- and angle-adjustable, 260 x 130 mm (4) | XXX,- |

Backrest Upholstery

| | | |
|-----------|--|-------|
| BRU030078 | Backrest sling, Nylon, adjustable, 4 straps, black | std- |
| BRU030079 | Backrest sling, Nylon, vented, adjustable, 4 straps, black | XXX,- |
| BRU030077 | Backrest sling, Nylon, adjustable, 7 straps, black | XXX,- |
| BRU030081 | Backrest sling, Nylon, vented, adjustable, 7 straps, black | XXX,- |

JAY Back

€

| | | |
|-----------|-----------------------|-------|
| JAY080001 | JAY Shape back (1)(2) | XXX,- |
|-----------|-----------------------|-------|

JAY Accessories

| | | |
|-----------|---|-------|
| JAY080011 | JAY Shape lateral support (LxH) 100 x 120 mm (pair) (2) | XXX,- |
| JAY080010 | JAY Shape lateral support (LxH) 150 x 150 mm (pair) (2) | XXX,- |

Armrest

€

| | | |
|-----------|---|-------|
| BRU040053 | Armrest with armpad (300 mm), tool height- and depth-adjustable (3) | std- |
| BRU040054 | Armrest with armpad (300 mm), height-adjustable, short/long (3) | XXX,- |
| BRU040052 | Single post sideguard, armpad (330 mm), tool height-, depth-adjustable, removable | - |
| BRU040018 | Single post sideguard, armpad (330 mm), height-adjustable, tool depth-adjustable, removable | XXX,- |

Legrest & Footplates

€

Hanger Angle

| | | |
|-----------|-------------------|---|
| BRU050002 | Hanger angle 70 ° | - |
| BRU050001 | Hanger angle 80 ° | - |

Composite Hanger

| | | |
|-----------|--------------------------------------|------|
| BRU050003 | Hanger, composite, swing away, left | std- |
| BRU050004 | Hanger, composite, swing away, right | std- |

Elevating Legrest (ELR)

| | | |
|-----------|--|-------|
| BRU050009 | Hanger, aluminium, flip-up (0° - 90°), swing away, left | XXX,- |
| BRU050010 | Hanger, aluminium, flip-up (0° - 90°), swing away, right | XXX,- |

Amputee Support Pad

| | | |
|-----------|----------------------------|-------|
| BRU050014 | Amputee support, left (4) | XXX,- |
| BRU050013 | Amputee support, right (4) | XXX,- |

Cast Support

| | | |
|-----------|----------------------------|-------|
| BRU050093 | Cast support, left (4)(5) | XXX,- |
| BRU050094 | Cast support, right (4)(5) | XXX,- |

Footplate

| | | |
|-----------|---|------|
| BRU050104 | Footboard, divided, composite, flip-up (sideways), heel loop, black | std- |
|-----------|---|------|

Castor Wheels

€

| | | |
|-----------|---|---|
| BRU080056 | Castor, 5", solid, rim: composite, black | - |
| BRU080052 | Castor, 6", solid (soft), rim: composite, black | - |
| BRU080206 | Castor, 6", solid, rim: composite, black | - |
| BRU080048 | Castor, 6", solid, black tires, rim: composite, black | - |

(1) SW 360 - 500 mm, BH 450 mm

(2) Not with half-folding backrest

(3) Not with reclining backrest, not with seat height 410 / 435 mm (5"/24"; 6"/24")

(4) Not with footplate

(5) Not with elevating legrest (ELR)

Backrest Upholstery



// BRU030078 Backrest sling, Nylon, adjustable, 4 straps, black



// BRU030077 Backrest sling, Nylon, adjustable, 7 straps, black



// BRU030079 Backrest sling, Nylon, vented, adjustable, 4 straps, black

JAY Back



// JAY08001 JAY Shape back



// JAY080011 JAY Shape lateral support (LxH) 100 x 120 mm (pair)

Armrest



// BRU040053 Armrest with armpad (300 mm), tool height- and depth-adjustable



// BRU040054 Armrest with armpad (300 mm), height-adjustable, short/long



// BRU040052 Single post sideguard, armpad (300 mm), tool height- and depth-adjustable, removable



// BRU040018 Single post sideguard, armpad (300 mm), height-adjustable, tool depth-adjustable, removable

Legrest & Footplates



// BRU050002 Hanger angle 70°



// BRU050001 Hanger angle 80°



// BRU050009 Hanger, aluminium, flip-up (0° - 90°), swing away, left (ELR)



// BRU050014 Amputee support, left



// BRU050093 Cast support, left

| | | |
|-----------|---|---|
| BRU080049 | Castor, 8" x 1 1/4", solid, rim: composite, black | - |
| BRU080053 | Castor, 8" x 1", pneumatic, rim: composite, black | - |
| BRU080047 | Castor, 8" x 2", solid, rim: composite, black | - |

Rear Wheels €

| | | |
|-----------|---|---|
| BRU070066 | Rear wheel, 12", solid (1) | - |
| BRU070067 | Rear wheel, 12", pneumatic (1) | - |
| BRU070070 | Rear wheel, 22", solid, 36 spokes (silver), cross-wise spokes, handrim Alu anodized-silver | - |
| BRU070050 | Rear wheel, 24", solid, 36 spokes (silver), cross-wise spokes, handrim Alu anodized-silver | - |
| BRU070051 | Rear wheel, 24", pneumatic, 36 spokes (silver), cross-wise spokes, handrim Alu anodized-silver | - |
| BRU070053 | Rear wheel, 24", solid, black tires, 36 spokes (silver), cross-wise spokes, handrim Alu anodized-silver | - |
| BRU070068 | Rear wheel, 24", solid, drum brakes, 36 spokes (silver), cross-wise spokes, handrim Alu anodized-silver (2) | - |
| BRU070064 | Rear wheel, 24" x 1 3/8", MAG, solid, handrim composite | |
| BRU070054 | Rear wheel, 24" x 1 3/8", MAG, pneumatic, handrim composite | |

One-hand Operation

| | | |
|-----------|--|-------|
| BRU070401 | Rear wheel, one-hand operation, 36 spokes, cross-spoked, left actuation (3) | XXX,- |
| BRU070402 | Rear wheel, one-hand operation, 36 spokes, cross-spoked, right actuation (3) | XXX,- |

Handrim Cover

| | | |
|-----------|----------------------------|-------|
| BRU070251 | Handrim cover, Silicon (4) | XXX,- |
|-----------|----------------------------|-------|

Axles €

| | | |
|-----------|------------------------|------|
| BRU070150 | Quick release axle (5) | std- |
|-----------|------------------------|------|

Center Of Gravity (COG) €

| | | |
|--------|---|---|
| COG050 | Centre of gravity -50 mm (rear wheel extension) (6) | - |
| COG025 | Centre of gravity -25 mm (rear wheel extension) (7) | - |
| COG00 | Centre of gravity 0 mm (5) | - |
| COG25 | Centre of gravity 25 mm (5) | - |
| COG50 | Centre of gravity 50 mm (2), (5) | - |

Wheel Locks €

| | | |
|-----------|--|-------|
| BRU060002 | Knee-lever brake | std- |
| BRU060010 | Brake lever extension, knee-lever brake, fold-down | XXX,- |

Trays €

| | | |
|-----------|--------------------|-------|
| BRU090011 | Tray, push-fit (8) | XXX,- |
|-----------|--------------------|-------|

Accessories €

| | | |
|-----------|--|-------|
| BRU090039 | Crutch holder, left (2) | XXX,- |
| BRU090060 | Crutch holder, right (2) | XXX,- |
| BRU070831 | Spoke guard, transparent (9) | XXX,- |
| BRU090044 | Anti-tip tubes, plug-in, flip-up, pair (10) | XXX,- |
| BRU090042 | Anti-tip tubes, plug-in, flip-up, left (10) | XXX,- |
| BRU090043 | Anti-tip tubes, plug-in, flip-up, right (10) | XXX,- |
| BRU090010 | Transit wheels (5) | XXX,- |
| BRU090025 | Air Pump | XXX,- |
| BRU090135 | Positioning belt, carseat buckle | XXX,- |
| BRU090102 | Crash test option | XXX,- |

Colours €

| | | |
|-----------|---------------|---|
| BRU100140 | Apple green | - |
| BRU100116 | Brilliant red | - |
| BRU100111 | Navy Blue | - |

(1) Only with fixed axle

(2) Not with reclining backrest

(3) Only with FSH46, FSH485, 24" wheels

(4) Only with 24" wheels

(5) Not with 12" wheels

(6) Not with 12" wheels and SD 460 mm

(7) Not with 12" wheels and SD 410 mm and 435 mm

(8) SW 380 mm to 480 mm

(9) Not with one-hand operation, not with 12", 22" wheels

(10) Standard with reclining backrest

Rear Wheels



// BRU070066 Rear wheel, 12", solid



// BRU070070 Rear wheel, 22", solid, 36 spokes (silver), cross-wise spokes, handrim Alu anodized-silver



// BRU070053 Rear wheel, 24", solid, black tires, 36 spokes (silver), cross-wise spokes, handrim Alu anodized-silver



// BRU070402 Rear wheel, one-hand operation, 36 spokes, cross-spoked, right actuation



// BRU070251 Handrim cover, Silicon

Wheel Locks



// BRU060002 Knee-lever brake



// BRU060010 Brake lever extension, knee-lever brake, fold-down



// BRU070068 Rear wheel, 24", solid, drum brakes, 36 spokes (silver), cross-wise spokes, handrim Alu anodized-silver

Trays & Accessories



// BRU090011 Tray, push-fit



// BRU090039 Crutch holder, left



// BRU090042 Anti-tip tubes, plug-in, flip-up, left



// BRU090010 Transit wheels



// BRU090135 Positioning belt, car-seat buckle

Comments for personalization



BRU100142 Selenium grey

-

BRU100124 Signal white

-

Breezy Style X Ultra

€

Base price

Total Of Additional Equipment

Packaging And Transport

Exclusive VAT

VAT

Date

Signature

Day

Month

Year



Sunrise Medical S.L

Poligoni Bakiola,41

48494 Arrankudiaga

Phone: +34 902 142 434

Fax: +34 946 481 575

E-Mail: Monica.garcia@sunrisemedical.es

Patricia.delafuente@sunrisemedical.es

www.SunriseMedical.eu