

Mounting manual

" Samson " not plaible Boot hoist

Gewijzigd: 14-03-2005



Contents:

1. Preparations.	3
2. Installation of the Samson.	4
3: The rotating unit	6
4: connecting the rotating unit electrically	7
5. Replacing the hoisting cord.	9
6. Conversion to a lefthanded version	10
7. Shortening the hoist neck	11
8. Removing the Samson	12

1. Preparations.

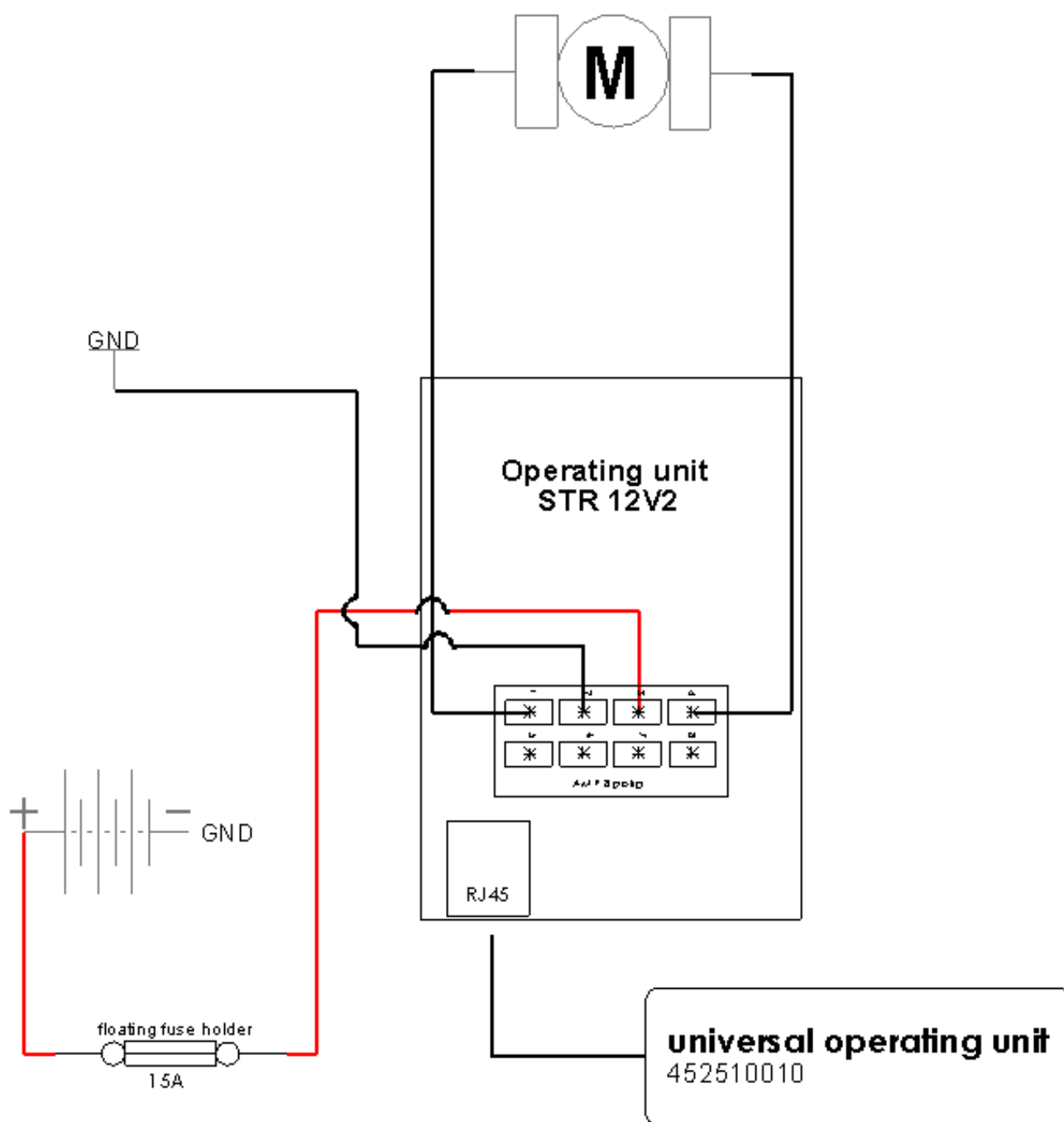
Below you find the preparations that need to be made before installation of the Samson can take place.

- Remove the negative pole from the battery.
- Connect the red 2,5 mm² wire to the positive pole of the battery (+30).
- Place the floating fuse holder at ± 20 cm from the battery or in the original fuse box.
- Feed the wire through the bulkhead. For this purpose it is best to use an original lead-through plug.
- Bundle the wires with binding strips and also protect the single wire. Ensure that the wire does not hang taut and that the wire runs up towards the rubber cap. This in order prevent leakage.
Then drops of water are not guided inside along the wire.
- Pull the red wire (+30) through to the rear, where the boot hoistitted.
- Make a mass connection with the black wire on the rear of the hoist (**do not use parkers**).
- Place the 15 A fuse in the holder.
- Reconnect the negative pole to the battery.

2. Installation of the Samson.

Below you will find a step-by-step scheme in chronological order that explains how the Samson should be installed.

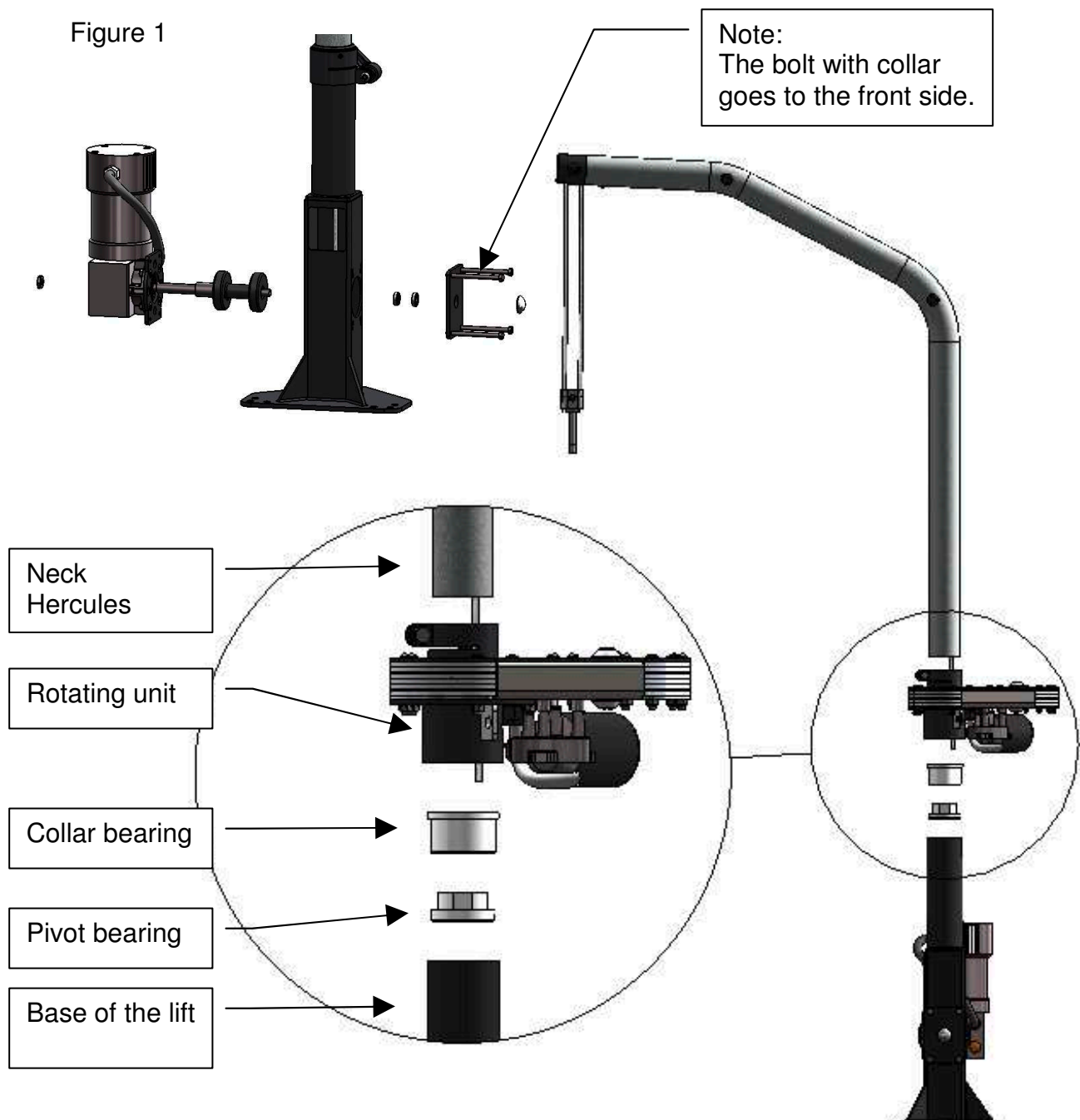
1. Place the hoist on the right in the back of the car.
2. Check to see if there is sufficient space behind the hoist, as the hoist needs enough space when it is folded down in the corner of the boot.
3. If necessary, determine the height of the hoist. Make sure that in case the hoist is shortened, **no burrs** remain behind on the sawed edge. (see item 6, page 8)
4. In case the hoist arm is shortened, check the length of the hoisting cord. Ensure that 3 “adhesion” windings of the cord remain around the spindle in the lowest position at all times.
5. Check to see if there is enough space to unlock the hoist.
6. When you have found the right position, then determine where the fastening holes should be made.
Please note that there are no obstacles under the base construction, for instance supports, and that there are no wires there.
Also check that the bottom plate is flat.
7. For strength reasons please install 40x8 strips under the bottom.
8. Mount the Samson with M8 8.8 bolts.
9. Check the stability of the construction.
10. Follow the supplied electrical circuit diagram below for connection of the controls.
11. When connecting the diagram, make a good earth connection.
Do not use **self-tapping screws (“parkers”)**!



3: The rotating unit (optional)

1. Assemble the rotating unit as follows:
2. Disconnect the negative pole from the battery.
3. Disassemble the engine and untie the cord from the cylinder drum.
4. Remove the neck from the base of the lift.
5. Guide the cord through the rotating unit, the collar bearing, the pivot bearing and the base of the lift.
6. Place the rotating unit on the collar bearing, then turn the clamping bush to tighten it.
7. Next, tie the cord to the cylinder drum and reattach the engine to the base.
8. Close the rotating unit as shown on page 6.
9. Press the button "IN" to set the rotating unit to the "0" position.
10. Now position the neck in the direction of travel and tighten the clamping bush on the neck.

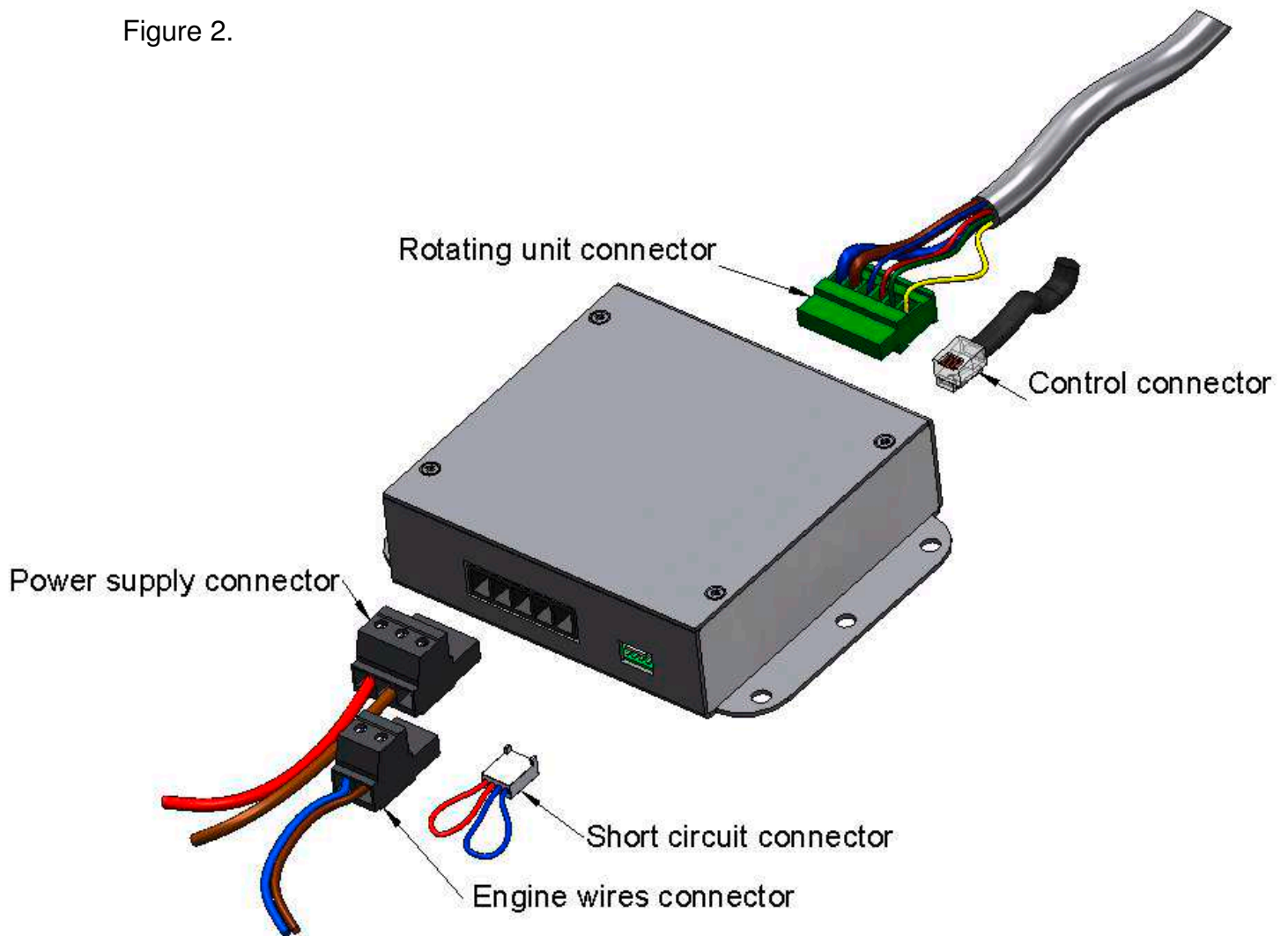
Figure 1



4: connecting the rotating unit electrically.

2.1 Connecting diagram of the rotating unit

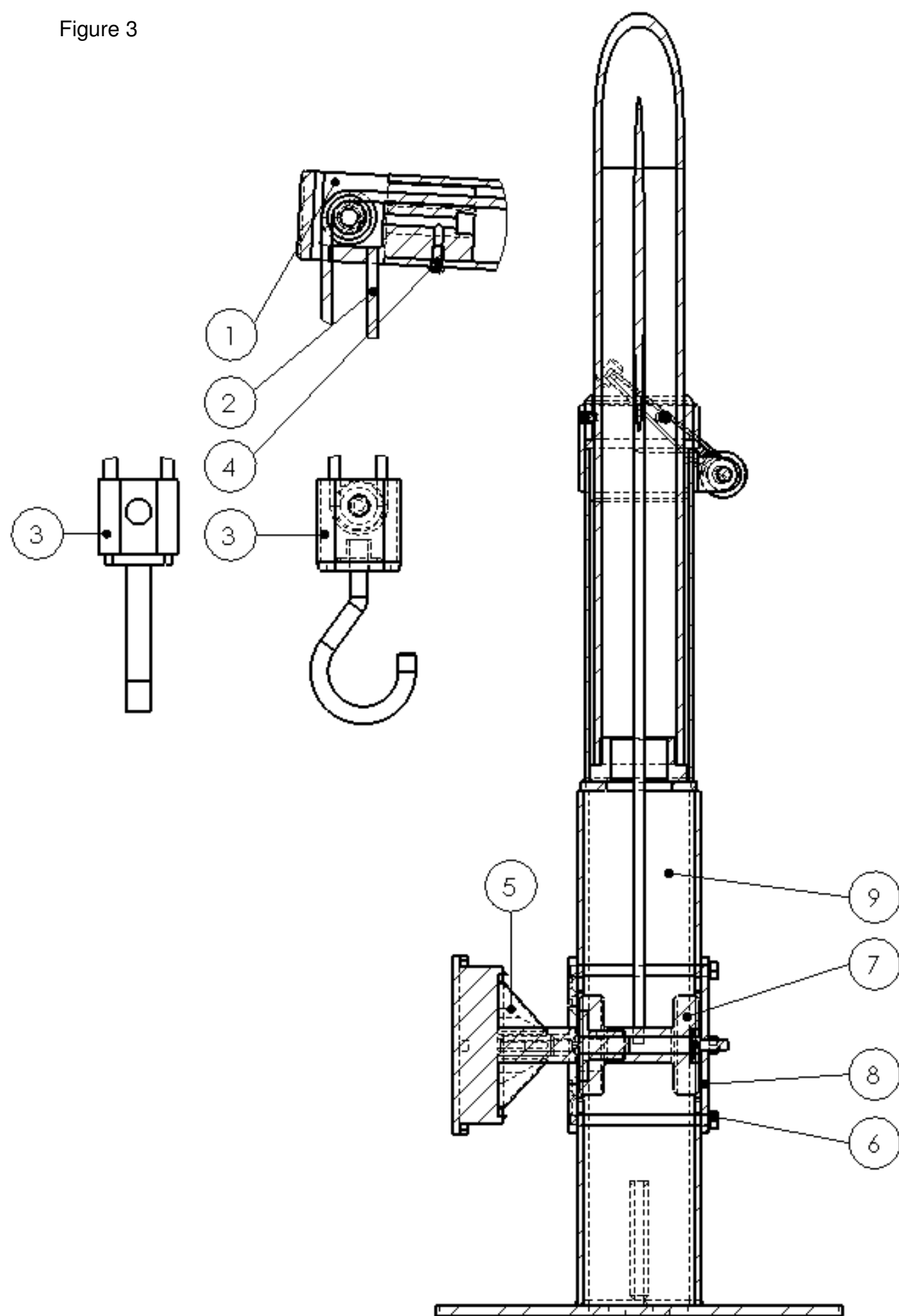
Figure 2.



Next, the clamp of the negative pole may be reattached to the battery.

Make sure the assembly is functioning properly.

Figure 3



5. Replacing the hoisting cord.

When the hoisting cord shows visible signs of wear, it should be replaced. To replace the hoisting cord please take the following steps (see also Figure 3).

1. Remove the hoisting hook (3) from the hoisting cord (2).
2. Remove the running wheel holder (1) by removing the sheet metal screw (4).
3. Remove the motor (5) by removing the screws (6).
4. Slide the drum wheel (7) off the motor shaft and loosen the knot of the hoisting cord (2).
5. Remove the old hoisting cord and place the new hoisting cord in the hoist neck. (Hoisting cord Ø 4mm, length 4.10mtr. Art.no.451510001).
6. Fix the hoisting cord to the drum wheel (7) in the same manner in which it was fitted, check to see if the support bearing is properly positioned in the drum wheel and slide it back onto the motor shaft
(knot of the hoisting cord should be on the side of the motor)
7. Fit the motor (5) back onto the hoist using the screws (6).
8. Feed the cord through the running wheel holder (1) and fasten it to the hoisting neck with the sheet metal screw (4).
9. Fasten the hoisting hook to the hoisting cord and check to see whether everything is functioning properly. Ensure that the motor turns **to the left** (right-sided version), so that the hoisting cord is wound up on the rear side of the drum wheel.

This knot is used to fasten the hook (1) to the cord (2) and to fasten the cord (2) to the drum wheel (7)..

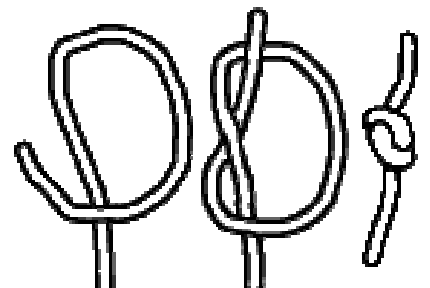


Figure 3

6. Conversion to a lefthanded version

The “Samson” boot hoist can be converted to a left-sided version in a simple manner. In order to convert the hoist, do the following. (Also see figure 3.)

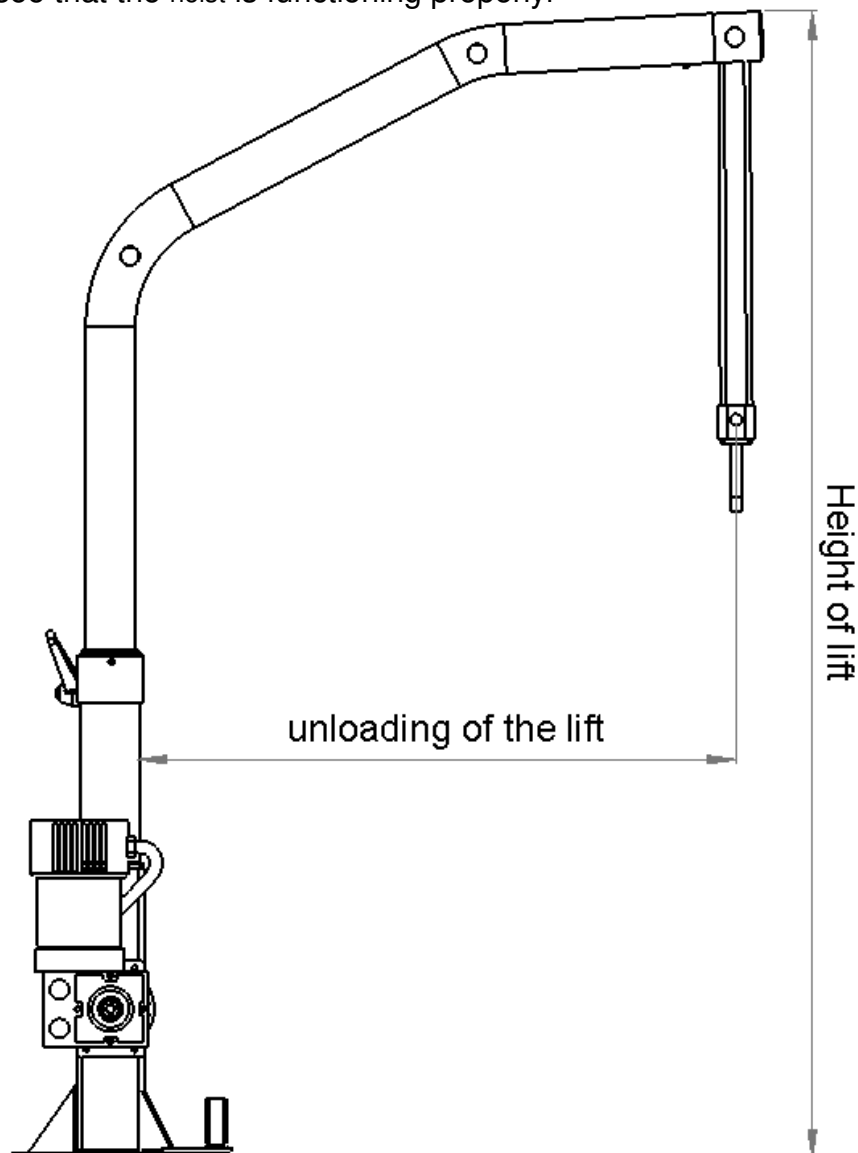
1. Remove the motor (5) and the counter fastening plate (8) by removing the screws (6-4x).
2. Slide the drum wheel (7) off the motor shaft and turn it 180 degrees. Put it through the hole in the tilting unit (9) to the other side of the hoist.
3. Switch the motor (5) and the counter fastening plate (8) around and slide the drum wheel back on the motor shaft (knot hoisting cord on the side of the motor), check to see if the support bearing is properly placed in the drum wheel (7) and fit it all back on the hoist with the screws (6-4x).
4. Let the motor run and check to see that it is functioning properly.
5. Remove the operating lever (10) and fit it counter to the original position of the locking lever (11).

7. Shortening the hoist neck

There is a simple way to shorten the hoist neck of the “Hercules”.
For shortening the hoist neck, do the following: (also see figure 2.)

1. Remove the hook (3) and running wheel holder (1) by removing the sheet metal screw (4).
2. Slide the hoist neck out of the hoist and shorten it to the desired length.
Make sure that the shortened end is free of burrs in order to prevent wear and tear of the hoisting cord!
3. Place the hoisting cord (2) in the hoist neck and feed it through the running wheel holder (1) and hook (3), re-attach it to the running wheel holder as in figure 1. then fix the running wheel holder to the neck by means of the sheet metal screw (4)
4. Place the hoist neck in the hoist check to see whether the hoist neck can turn properly.
5. Check to see that the hoist is functioning properly.

Figure 5



8. Removing the Samson

Disassemble the hoist.

Interrupt the electricity supply to the hoist.

(If necessary remove all wiring to the hoist)

The fixing holes in the bodywork can be sealed by clamping one ring on the inside and one on the bottom side of the body using a bolt and nut.



Protect the fastening on the bottom side against corrosion!