



✓
Made in
Germany

✓
Wood from
sustainable
forestry

On bed-safari

Care beds for children | Therapy couches | Travel bed | Babywalker

Welcome

Love of life for people with disabilities

I'm Günter Bußmann, and I founded this company in 1995 with the aim of manufacturing products that would provide other people with a love of life and make their everyday life easier.

The choice had to be wood as a natural product! The pleasant feel when you touch wood fascinates children in particular.

We are continuously introducing innovations into our products in collaboration with establishments such as children's homes, and in particular by talking with parents who are caring for their children.

If you have a challenge you need to solve, would like some advice on the right therapy bed for a child or want to order a bed, please do not hesitate to give us a ring:

+49 (0) 25 64 / 93 09 - 70

Günter Bußmann

Our aim is to reconcile quality, ergonomics and your personal wishes with nature, so that both you and your child are satisfied.

Wood from afforestation areas and forests that are managed in an ecologically sound way. PEFC certified!

Environmentally conscious manufactory

As a manufacturer of therapy beds for children, nursing beds, heavy duty beds, Huntington's Chorea beds and therapy couches, we follow a philosophy of thinking holistically, and we also attach great value to the subject of the environment and energy when we are putting this into practice.

Materials

All the materials incorporated into our products, and especially the woods we use for producing them, come from afforestation areas and forests in Europe that are managed in an ecologically sound way. We obtain them from PEFC certified suppliers.

Production site

Our production buildings are energy-optimised and the production area is also fitted throughout with under floor heating (heat pumps)

Our bright rooms are flooded with light and require hardly any additional lighting during the day, which means that we can save a lot of energy here and protect the environment!

Machinery and equipment

The refuse generated during the production process (dust and wood shavings) is compressed into briquettes and made available for burning so as to protect the environment.

The exhaust air is filtered, and by means of a heat recovery system more than 80% of the residual heat can be returned to the building. Modern, energy-optimised machinery ensures that our energy consumption is as low as possible.

Energy procurement (electricity)

A photovoltaic system of almost 200 KW is used to supply our electricity. Using this we are able to supply the energy needed for the heat pump and the majority of the energy for the production facilities.



Quality and processing

There are many factors that make a product valuable:

Raw materials

At the start of production comes the critical selection of raw materials. In our factory we only work with knotless woods from an environmentally friendly perspective.

Surface

In order to maintain the natural character of the wood, the surfaces are exclusively finished with natural wax which has been tested in terms of its health and ecological aspects and in accordance with DIN EN 71 (safety of toys).

Ergonomics

When developing the beds we took care to ensure that the edges are well rounded during processing. The fittings are also on the inside to prevent injury.

Standards

All our beds comply with the European standards, bear the CE mark and are compatible with one another. We thus offer the optimal conditions for you to find the ideal solution depending on your individual requirements.

Safety

All the beds in the SAVI range offer the childproof patented lock which prevents the doors being opened inadvertently (DBGM protected).



We are specialized in nursing beds, comfort beds and special beds for seniors, heavyweights and chorea Huntington's patients.



Special requirements are possible by request. We look forward to your call +49 (0) 25 64/93 09 - 70!



Welcome

Advice

We find individual solutions for our customers thanks to our experience and creativity. We offer solutions for every sized budget and will realise your desired requirements.

We would be pleased to send you a written, no obligation quotation or advise you by phone.

Tip: On page 71 you will find a customization form.

Fon: +49 (0) 25 64 / 93 09 - 70

Fax: +49 (0) 25 64 / 93 09 - 60

Custom made beds

We also produce individual custom made beds. Our technical team will be happy to talk through the possible options with you.

Showroom

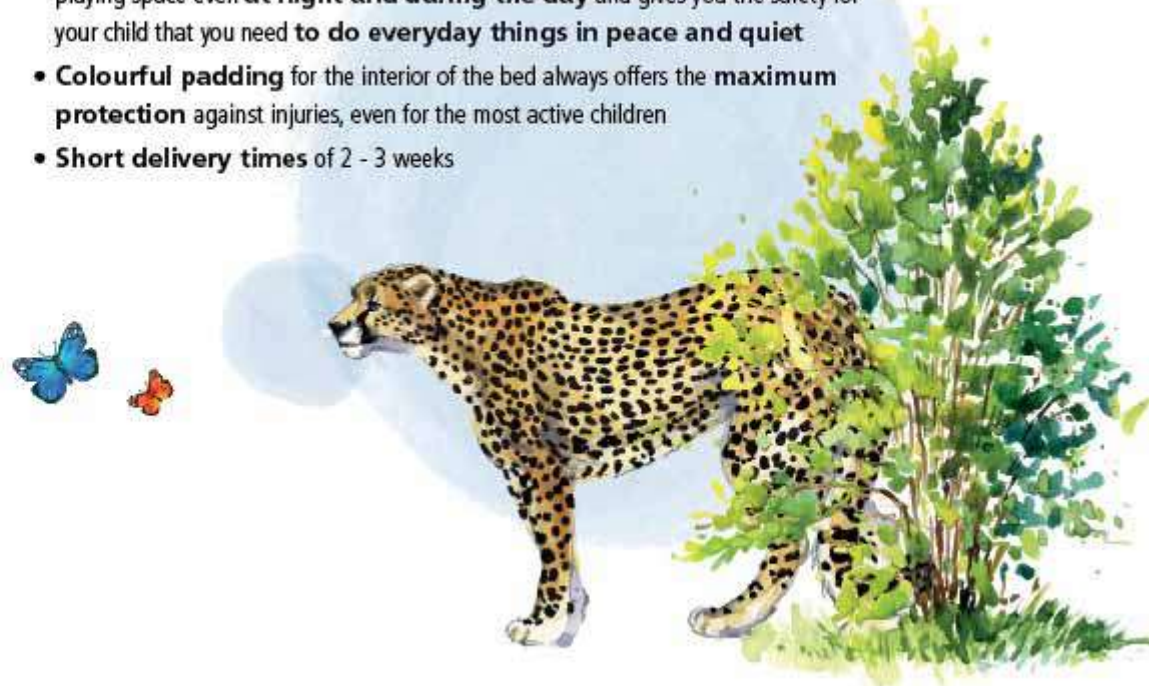
Why not visit our production site in Germany? If you register in advance by phone we will schedule sufficient time to provide the optimal advice for you and/or your children.

We also offer product training courses at our premises for specialist retailers!

*Our clearly structured manufacturing
enables us to realise many customers'
wishes quickly and at a reasonable price.*

Why a bed from SAVI?

- **Great safety**, thanks to sophisticated and safe locking systems that prevent your child from unintentionally opening from the inside
- **Biologically neutral, pollutant-free wood treatment** according to DIN 71-3 (safety of toys)
- The best for your child - professional construction, high stability and **reliability**
- **Comfortable, back-friendly height** due to electric height adjustment (stepless)
- **Many bed sizes** available (up to 180 x 220 cm)
- **Individual equipment options**, e.g. rigid, manual or infinitely variable electric slat bed base
- **Optimal eye contact with your child** through the safety windows made of special perspex
- A **large, safe indoor area** of the bed (100 x 200 cm) offers your child enough playing space even **at night and during the day** and gives you the safety for your child that you need **to do everyday things in peace and quiet**
- **Colourful padding** for the interior of the bed always offers the **maximum protection** against injuries, even for the most active children
- **Short delivery times** of 2 - 3 weeks



Content

Children's nursing beds and therapy couches from our rehabilitation production



Tom



Niklas



Knut



Savoir-Vivre



Jonas



Lola



Felix



Travel bed | Babywalker

Contents

SAVI Reha Solutions	p. 02
Tom	p. 06
Tom Paddy	p. 14
Niklas	p. 16
Knut	p. 24
Knut (b) 40	p. 36
Savoir-Vivre	p. 38
Jonas	p. 46
Lola	p. 52
Felix	p. 58
Travel bed	p. 62
Babywalker	p. 63
Accessories	p. 64
Slatted bed base	p. 66
Mattresses	p. 67
Range of colours	p. 68
Padding	p. 69
Customization form	p. 71

Tom



Great colour?
It's available for each of
our beds and even
more wood colours!
See page 69.

↖ e.g. in wood colour
„Wenge“

Special beds for unique children – our Tom can be designed variably according to the needs of your child and therefore always offers the right solution.

Thanks to the four-winged folding sliding door, the barred sides and the flexible height adjustment possibilities, our Tom provides an optimal therapeutic support. Due to the low entry height of a little about 20 cm even smaller children can get into the bed on their own.

Low entry height of about 20 cm possible



Electric height adjustment



Head- & footrest manual or electric adjustment (option)



More info about
Tom:
www.savi.de/beds/tom

EN 60601-2-52
DIN EN 32623

According to Medical Devices Act
CE-Marking
Declaration of Conformity

Tom

Best security for your child,
thanks to optimal locking systems

Why a bed from SAVI?

- Great safety for your child
- Biologically neutral, pollutant-free (DIN EN 71-3)
- Stability and reliability
- Comfortable, back-friendly height electric
- Many bed sizes
- Individual equipment options
- Optimal eye contact with your child
- Large, safe indoor area
- Colourful padding for maximum protection
- Short delivery times

Tom' individual strengths

- Four-winged door to open the complete front
- Castors
- High barred sides (option)
- Low entry height of 20 cm minimum (optional)
- Trendelenburg- / Antitrendelenburg-function (option)
- Fixed skai-padding (also with vinyl windows) (option)



Choice of colours (see on page 68)

A lot of safety, even for
particularly active
children



Barred side height 72 cm,
e.g. in blue-purple colour accent with wooden castors



Barred side height 113 cm,
e.g. in blue-purple colour accent with wooden castors



Barred side height 135 cm,
e.g. in blue-purple colour accent with wooden castors

Technical data

Lying area	External dimension	Article-no.
100 x 200 cm	115,5 x 223 cm	155.34.008
90 x 200 cm	105,5 x 223 cm	155.34.008.L
90 x 170 cm	105,5 x 193 cm	155.34.008.M
65 x 155 cm	80,5 x 178 cm	155.34.008.S
70 x 140 cm	85,5 x 163 cm	155.34.008.XS
Doors		
Four-winged door to open the complete front		*
Four-winged door on both sides	99.750	+
270° door, door outwardly opening	99.704	+
270° door, door outwardly opening on both sides	99.704BEID	+
Locking mechanism		
Child-proof SAVI-lock I		*
Child-proof SAVI-lock I metal	40100003	+
SAVI-lock II	99.033	+
SAVI-lock III	99.034	+
SAVI-lock IV	99.034A	+
Lying height (top of slatted bed base)		
34 - 104 cm electric height adjustment		*
Barred side height	Overall height	
72 cm	114 cm	+
113 cm	155 cm	*
135 cm	177 cm	+
Special sizes on request		+
Slatted bed base		
No adjustment (fixed)		+
Manual adjustment		*
Electric adjustment	99.200	+
Trendelenburg-/Antitrendelenburg-function (sloping position)	99.211	+
Running gear		
Four castor running gear with total locking mechanism		*
Designer wooden castors	99.885	n.a.c.
Without castors and low entrance height of 20 cm	99.883	+
Small castors and low entrance height of 27 cm	99.881	+
Kind of wood		
Beechwood „natural oiled“ (further colours see p. 69)		*
Mattresses		
Polyfoam mattress		*
Cold foam mattress	99.031.5	+
Reha-star mattress plus (up to stage 2)	99.031.3.PLUS	+
Reha-star mattress II (up to stage 4)	99.031.3.ZWEI	+
Incontinence cover	99.031.3ZA50	+

* = standard o.r. = on request + = accessories n.a.c. = no additional charge

Technical data

Coloured features		
Natural	90.100	n.a.c.
Yellow	90.128	n.a.c.
Orange	90.204	n.a.c.
Blue-purple	90.405	*
Dark-purple	90.406	n.a.c.
Blue	90.515	n.a.c.
Green	90.618	n.a.c.
Equipment		
Children's name on side of bed		n.a.c.
Coloured sticks		n.a.c.
Perspers instead of sticks		*
Sticks instead of perspers	99.815	n.a.c.
Touch protection for height adjustment	99.900	+
External lock on side of bed	99.706	+
Feed tube hole	99.840	o.r.
Raising aid	99.802	+
Net-roof	99.800	+
Adaption of the bed for sloping ceiling		o.r.
Mattress holder	99.891	+
Protection for the bed base in case of kicks	99.892	+
Wood care set	99.880	+
Padding		
Skai-padding 50 cm height	99.051	+
Skai-padding 100 cm height	99.051.100	+
Fixed skai-padding	99.051.FEST	o.r.
Fixed skai-padding with vinyl windows	99.051.FEST	o.r.
Edge padding	99.052	+

* = standard o.r. = on request + = accessories n.a.c. = no additional charge

Our skai-padding is in many colours available!

You can find a pre-selection on our website at:

www.savi.de/skai-padding



Tom



Open side front thanks to four-winged sliding door

Thanks to its folding-sliding mechanism, the door offers the maximum stability and precise operation in every position. The design is a harmonious combination of quality and function. The entire front side can be opened in this way.

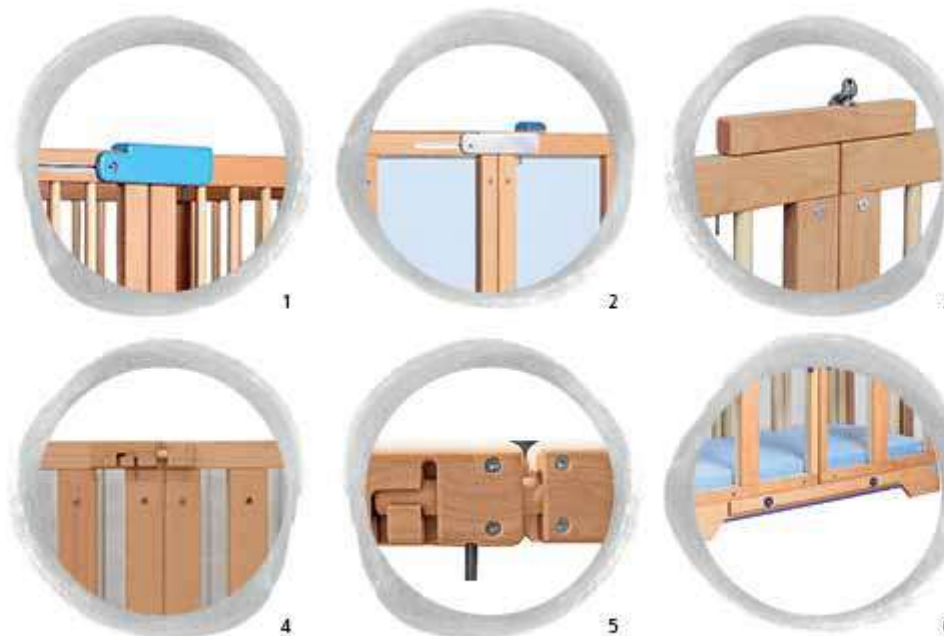
Tom adapts perfectly to the situation and makes everyday life with your child easier.

Naturally by request we can also offer customised additional doors, and custom-made sloping roofs are also not a problem for us.



Safety first – SAVI door locks

- 1 Child-proof SAVI-lock I (base)
- 2 Child-proof SAVI-lock I made of metal
- 3 SAVI-lock II
- 4 SAVI-lock III: The labyrinth guide prevents the child opening the bed by accident. This lock is keyless and has no magnets. Can also be retrofitted.
- 5 SAVI-lock IV: Here too the bed is opened by means of a labyrinth guide, but in addition this lock also operates against resistance. This lock is keyless, without magnets and can be retrofitted.
- 6 External lock on side of bed (increases the stability and provides more secure)



Great solutions for
door locks – highest
safety first

Little tip:

In this catalogue you can discover many bed variants that we have already produced. You can recognize them by the „ID“ below the illustrations.

Key data of Tom

- Barred side height 72 cm,
Barred side height 113 cm,
Barred side height 135 cm /
special sizes on request
- Slatted bed base 34 - 104 cm or
Slatted bed base 20 - 90 cm (without wheels)
- Trendelenburg-/Antitrendelenburg-function (option)
- Choise between perspex or sticks

270° door to fold back completely

- Easy to use manually
- Doors on the head and foot elements fold back completely
- 270° version can also be supplied with firm skai-padding



ID: 15938

270° door



ID: 20009



Many wood colours possible (see p. 69)



Tom

All functions of the bed can always be used
without removing the padding beforehand!

Optimum protection thanks to fixed Skai-padding

Your child is very active? With the firmly integrated skai-padding (75 mm height), you offer your child optimum protection.

For more information on the different padding options, see page 69/ 70!

Optimal view thanks to integrated vinyl windows

The integrated vinyl windows fit flush with the firm skai-padding and thus offer a similar padding effect to the permanently integrated foam padding. The windows offer an optimal view. So you keep an eye on your child easily and your child feels visibly more comfortable.



ID: 20018



ID: 20723



ID: 18677

Examples



ID: 20048



ID: 16472
children's name
on side of bed



ID: 13175
low entrance height
without castors



ID: 14364
white painted



ID: 18574



ID: 18471



ID: 17767
all sticks



ID: 14849
touch protection
for height adjustment

„Sooo much space –
I'd love to cuddle
in it too!“



Tom Paddy

Tom Paddy's individual strengths

- Low entry height of 20 cm minimum
- High barred sides 113 cm
- Fixed skai-padding with vinyl windows
- Castors (option)
- Trendelenburg-/Antitrendelenburg-function (option)



short delivery times

← low entry height of about 20 cm possible



Technical data

Lying area	External dimension	Article-no.
90 x 200 cm	120 x 238 cm	155.34.008.L PADDY
90 x 170 cm	120 x 208 cm	155.34.008.M PADDY
Doors		
Four-winged door to open the complete front		*
Four-winged door on both sides	99.750	+
270° door, door outwardly opening	99.704	+
270° door, door outwardly opening on both sides	99.704BEID	+
Locking mechanism		
Child-proof SAVI-lock I		*
Child-proof SAVI-lock I metal	40100003	+
SAVI-lock II	99.033	+
SAVI-lock III	99.034	+
SAVI-lock IV	99.034A	+
Lying height (top of slatted bed base)		
20 - 90 cm electric height adjustment		*
Door height:	Overall height	
123 cm	149 cm	+
Slatted bed base		
Manual adjustment		*
Electric adjustment	99.200	+
Trendelenburg-/Antitrendelenburg-function (sloping position)	99.211	+
Running gear		
Without castors and low entrance height of 20 cm	99.883	+
Small castors and low entrance height of 27 cm	99.881	+
Kind of wood		
Beechwood „natural oiled“ (further colours see p. 69)		*
Mattresses		
Polyfoam mattress		*
Cold foam mattress	99.031.5	+
Reha-star mattress plus (up to stage 2)	99.031.3.PLUS	+
Reha-star mattress II (up to stage 4)	99.031.3.ZWEI	+
Incontinence cover	99.031.3ZA50	+

* = standard o.r. = on request + = accessories

Technical data

Equipment		
External lock on side of bed	99.706	+
Raising aid	99.802	+
Net-roof	99.800	+
Mattress holder	99.891	+
Protection for the bed base in case of kicks	99.892	+
Wood care set	99.880	+
Bluetooth-control		
Padding		
Fixed skai-padding with vinyl windows	99.051.FEST	*

* = standard o.r. = on request + = accessories

Fixed padding in creme or sky-blue.



Níklas



Be safe and free – Niklas offers your child unlimited freedom thanks to individual design options.

Our Niklas offers extreme flexibility and functionality in the barred sides. This bed can be reached from all sides because the grilles can be lowered independently of each other.

Maximum safety combined with limitless freedom – a good combination for well-being.



Electric height adjustment



Head- & footelement manual or electric adjustment (option)



EN 60601-2-52
DIN EN 32623

According to Medical Devices Act
CE-Markering
Declaration of Conformity

Niklas

Why a bed from SAVI?

- Great safety for your child
- Biologically neutral, pollutant-free (DIN EN 71-3)
- Stability and reliability
- Comfortable, back-friendly height electric
- Many bed sizes
- Individual equipment options
- Optimal eye contact with your child
- Large, safe indoor area
- Colourful padding for maximum protection
- Short delivery times

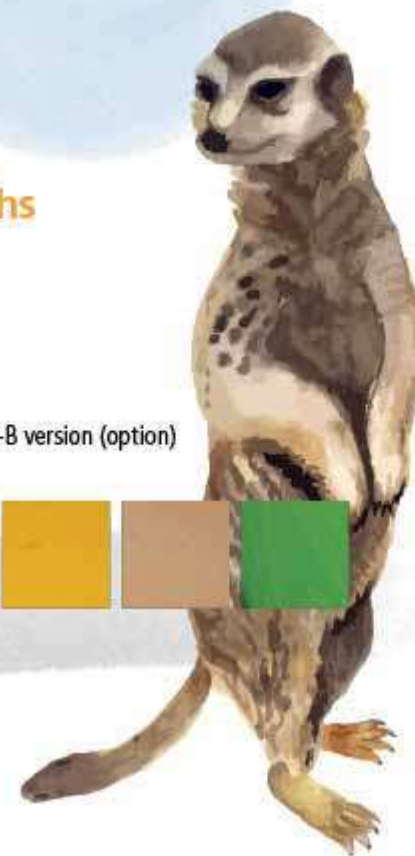



Niklas' individual strengths

- All barred sides can be lowered
- 60 cm barred side height
- Removable corner posts (option)
- Low entrance (approx. 47 cm) (option)
- Trendelenburg- / Antitrendelenburg-function A+B version (option)



Choice of colours (see on page 68)



perspex + sticks ,
e.g. with adjustable sides
in deep-purple colour accent



all perspex,
e.g. with electrically adjustable sides
in deep-purple colour accent



all perspex,
e.g. with electrically adjustable sides
in deep-purple colour accent



Three kinds of our motifpadding are available.
You will find more information on our website:
www.savi.de/skai-padding

Technical data

Lying area	External dimension	Article-no.
100 x 200 cm	115 x 215 cm	131.50.006
90 x 200 cm	105 x 215 cm	131.50.006.L
90 x 170 cm	105 x 185 cm	131.50.006.M
65 x 155 cm	80 x 170 cm	131.50.006.S
Doors		
All sides adjustable in steps (lowerable)		•
Lying height (top of slatted bed base)		
76 - 116 cm electric height adjustment		•
47 - 87 cm electric height adjustment (only in combination with 99.737 possible, see page 20)		o.r.
Barred side height		
	Overall height	
60 cm	140 cm	•
40 cm + 20 cm *	155 cm	99.737 +
Slatted bed base		
Manual adjustment	99.030	•
Electric adjustment	99.201	+
Trendelenburg- / Antitrendelenburgfunktion A (sloping position)	99.212	+
Trendelenburg- / Antitrendelenburgfunktion B (sloping position)	99.213	+
Running gear		
Four castor running gear with total locking mechanism		•
Designer wooden castors	99.885	n.a.c.
Kind of wood		
Beechwood „natural oiled“ (further colours see p. 69)		•
Mattresses		
Polyfoam mattress		•
Cold foam mattress	99.031.5	+
Reha-star mattress plus (up to stage 2)	99.031.3.PLUS	+
Reha-star mattress II (up to stage 4)	99.031.3.ZWEI	+
Incontinence cover	99.031.3ZA50	+

• = standard o.r. = on request + = accessories n.a.c. = no additional charge

* Indication

The electric height adjustment 47 - 87 cm is only in combination with a barred side height of 40 cm + 20 cm high slip-possible.

Technical data

Coloured features		
Natural	90.100	n.a.c.
Yellow	90.128	n.a.c.
Orange	90.204	n.a.c.
Blue-purple	90.405	n.a.c.
Dark-purple	90.406	•
Blue	90.515	n.a.c.
Green	90.618	n.a.c.
Equipment		
Children's name on side of bed		n.a.c.
Coloured sticks		n.a.c.
Perspers + sticks (as shown) ①	99.810LEXANNIK	+
4 removable corner posts	99.889	+
Only 1 side adjustable, 3 sides fixed	99.730	+
Only 2 sides adjustable, 2 sides fixed	99.731	+
1 electric adjustable side rail	99.735	+
2 electric adjustable side rails	99.736	+
Feed tube hole	99.840	o.r.
Raising aid	99.802	+
Sit up aid	99.820	+
Adaption of the bed for sloping ceiling		o.r.
2 drawers	99.040	+
Mattress holder	99.891	+
Protection for the bed base in case of kicks	99.892	+
Wood care set	99.880	+
Padding		
Motifpadding Greta, 50 cm	99.050GRETA	+
Motifpadding Paul, 50 cm	99.050PAUL	+
Motifpadding Pauline, 50 cm	99.050PAULINE	+
Skai-padding 50 cm height	99.051NIKLAS	+
Fixed skai-padding	99.051.FEST	o.r.
Fixed skai-padding with vinyl windows	99.051.FEST	o.r.

• = standard o.r. = on request + = accessories n.a.c. = no additional charge



Key data of Niklas

- Barred side height 60 cm, all side-rails adjustable
- Trendelenburg- / Antitrendelenburg-function (option)
- Lying height 76 - 116 cm or 47 bis 87 cm (low entrance)
- Electrically adjustable sides (option)
- Removable corner posts (option)
- Perspex (optional)
- Choice of colours



perspex + sticks,
e.g. low entrance (47 - 87 cm) and two top
elements (40 + 20 cm)



Benefits of electric adjustable sides

- Easy to use at the push of a button
- Lockable control element prevents unsupervised opening
- Can also be operated by people with disabilities
- Minimal operating strength required (pushbutton)
- Infinitely adjustable



Recessed safety grip

- Easy to use manually
- The safety gap on both recesses prevents unsupervised opening
- Minimal operating strength required (slider buttons)
- Grid adjustment



recessed safety grip (basic)



Removable
corner posts

Optimum protection thanks to fixed Skai-padding

Your child is very active? With the firmly integrated Skai-padding (75 mm height), you offer your child optimum protection.

For more information on the different padding options, see page 69/70!



Only the best
for your child!



ID: 20841



ID: 16581



ID: 15368



ID: 17167



ID: 10352



ID: 20631

Trendelenburg-function A

Inclination of the complete bed



Trendelenburg-function B

Inclination of the slatted bed base



ID: 10394
adaption of the bed
for sloping ceiling



ID: 10682
canopy bed, total height 215 cm,
entrance height 30cm

Little tip:

In this catalogue you can discover many bed variants that we have already produced. You can recognize them by the „ID“ below the illustrations.

„I love a good
place to sleep
and lounge.“



Examples



ID: 16069
drawers



ID: 10400
coloured sticks



ID: 18692
white stained



ID: 18499
without castors



ID: 20214
closeable feed tube hole
with sliding mechanism
(reclosable)



ID: 19204
small castors



ID: 19923
drawers



Knut



Great colour?

It's available for each of
our beds and even
more wood colours!
See page 69.



↖ e.g. in
wood colour
„Barrique“

Cuddle safely in Knut – the bed with a high degree of safety.

Thanks to the four-winged folding sliding door, the barred sides and the flexible height and inclination adjustment possibilities, this bed provides very good therapeutic support.



Trendelenburg- /Antitrendelenburg-
function



Electric height
adjustment



Head- & footelement manual or
electric adjustment (option)



More info about
Knut:
www.savi.de/beds/knut

EN 60601-2-52
DIN EN 32623

According to Medical Devices Act
CE-Markering
Declaration of Conformity

Knut

Why a bed from SAVI?

- Great safety for your child
- Biologically neutral, pollutant-free (DIN EN 71-3)
- Stability and reliability
- Comfortable, back-friendly height electric
- Many bed sizes
- Individual equipment options
- Optimal eye contact with your child
- Large, safe indoor area
- Colourful padding for maximum protection
- Short delivery times



Knut's individual strengths

- Barred side 64 - 89 cm
- Trendelenburg- /Antitrendelenburg-function
- Drawer / stowage (option)
- Doors or adjustable side rails (option)
- Low entry height of 21 cm minimum (option)



All models are available with alternative side rail heights

Knut (a)

Barred side height 64 cm
lying height 41 - 76 cm or
31 - 66 cm (small castors)



Knut (b)

Barred side height 78 cm
lying height 41 - 91 cm or
31 - 81 cm (small castors)



Knut (c)

Barred side height 89 cm
lying height 31 - 101 cm or
21 - 91 cm (small castors)



* Indication

With adjustable side rails the lying height changes to 41 - 111 cm!

Technical data

Lying area	External dimension	Article no.
100 x 200 cm	113 x 218 cm	
90 x 200 cm (size L)	103 x 218 cm	
90 x 170 cm (size M)	103 x 188 cm	
70 x 140 cm (size XS)	83 x 158 cm (Knut (c) 103 x 158 cm)	
65 x 155 cm (size S)	78 x 173 cm (Knut (c) 98 x 173 cm)	
Doors		
4-winged door to open the complete front		•
Four-winged door on both sides	99.750	+
270° door, door outwardly opening	99.704	+
270° door, door outwardly opening on both sides	99.704BEID	+
Locking mechanism		
Child-proof SAVI-lock I		•
Child-proof SAVI-lock I metal	40100003	+
SAVI-lock II	99.033	+
SAVI-lock III	99.034	+
SAVI-lock IV	99.034A	+
Lying height		
Top of slatted bed base	Barred side height	
(a) 41- 76 cm electric	64 cm ¹²⁾	• Knut (a)
(b) 41- 91 cm electric	78 cm ¹²⁾	• Knut (b)
(c) 31-101 cm electric	89 cm ¹²⁾	• Knut (c)
Additional charge for 1 adjustable side-rail*		
(+14 cm external length) manual	64 cm	99.710 +
electric		99.710EL +
manual	78 cm	99.712 +
electric		99.712EL +
manual	89 cm	99.714 +
electric		99.714EL +
Additional charge for 2 adjustable side-rails*		
(+14 cm external length) manual	64 cm	99.711 +
electric		99.711EL +
manual	78 cm	99.713 +
electric		99.713EL +
manual	89 cm	99.715 +
electric		99.715EL +
Slatted bed base		
Manual adjustment	99.030	•
Electric adjustment	99.200	+
Trendelenburg-/Antitrendelenburg-function (sloping position)		•

• = standard o.r. = on request + = accessories

(1) Indication

In combination with adjustable side rails not possible.

(2) Indication

All models are available with alternative side rail heights. We advise you gladly.

Technical data

Running gear		
Four castor running gear with total locking mechanism		•
Designer wooden castors	99.885	n.a.c.
Without or small rolls ¹⁰⁾ (21-91 cm)	99.882	n.a.c.
Kind of wood		
Beechwood „natural oiled“ (further colours see p. 69)		•
Mattresses		
Polyfoam mattress		•
Cold foam mattress	99.031.5	o.r.
Reha-star mattress plus (up to stage 2)	99.031.3.PLUS	+
Reha-star mattress II (up to stage 4)	99.031.3.ZWEI	+
Incontinence cover	99.031.3ZA50	+
Coloured features		
Natural	90.100	n.a.c.
Yellow	90.128	n.a.c.
Orange	90.204	•
Blue-purple	90.405	n.a.c.
Dark-purple	90.406	n.a.c.
Blue	90.515	n.a.c.
Green	90.618	n.a.c.
Equipment		
Children's name on side of bed		n.a.c.
Coloured sticks		n.a.c.
Perspex instead of sticks		o.r.
Perspex in the lower area of the head/foot end (standard on C)		o.r.
External lock on side of bed	99.706	+
Feed tube hole	99.840	o.r.
Raising aid	99.802	+
Sit up aid	99.820	+
2 drawers	99.040	+
Motor cover	99.803	+
Mattress holder	99.891	+
Protection for the bed base in case of kicks	99.892	+
Wood care set	99.880	+
Padding		
Motifpadding Greta, 50 cm	99.050GRETA	+
Motifpadding Paul, 50 cm	99.050PAUL	+
Motifpadding Pauline, 50 cm	99.050PAULINE	+
Skai-padding 50 cm height	99.051	+
Fixed skai-padding	99.051.FEST	o.r.
Fixed skai-padding with vinyl windows	99.051.FEST	o.r.
Edge padding	99.052	+

• = standard o.r. = on request + = accessories n.a.c. = no additional charge

* Indication

If you choose KNUT C with drop down sides (artikel-no.: 99.710 - 99.715) the lying height will change to 41 - 111 cm.

Open side front thanks to four-winged sliding door

Thanks to its folding-sliding mechanism, the door offers the maximum stability and precise operation in every position. The entire front side can be opened in this way. The design is a harmonious combination of quality and function. Naturally by request we can also offer customised additional doors, and custom-made sloping roofs are also not a problem for us.



ID: 19118



ID: 20218



ID: 20163

Key data of Knut

- Barred side height 64 cm,
Barred side height 78 cm,
Barred side height 89 cm,
in all model variants or different
height, on request
- Lying height

Knut (a)

41 - 76 cm
(with small castors 31 - 66 cm)

Knut (b)

41 bis 91 cm
(with small castors 31 - 81 cm)

Knut (c)

31 bis 101 cm
(with small castors 21 - 91 cm)

Hinweis: With adjustable side rails the lying height changes to 41 cm!

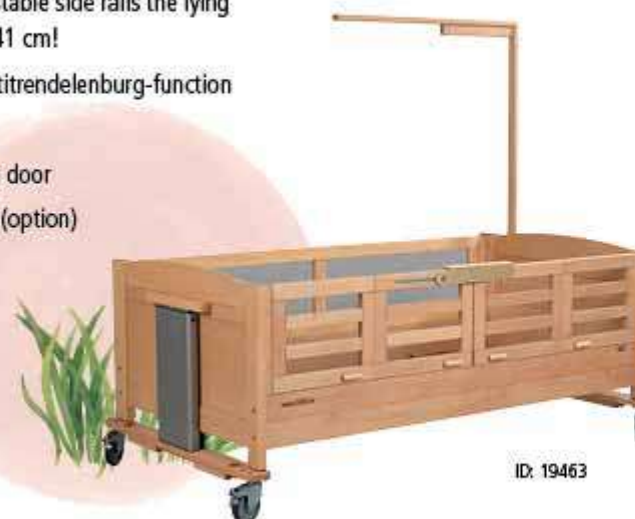
- Trendelenburg-/Antitrendelenburg-function
- Perspex (option)
- Four-winged sliding door
- Adjustable side rail (option)



ID: 18852



ID: 19842



ID: 19463

↙ The plus when it comes to intensive care

Tubing furnishing

Our tubing furnishing is available as follows:



ID: 17139



tubing with sliding perspex
(recloseable)



tubing on the middle foot element



ID: 14765



ID: 17018



ID: 20315



ID: 17496

Adjustable side rails



ID: 20355



ID: 14549



ID: 17451

Recessed safety grip

- Easy to use manually
- The safety gap on both recesses prevents unsupervised opening
- Minimal operating strength required (slider buttons)
- Grid adjustment



ID: 20350





Versions adjustable side rails

Our adjustable side rail is available as follows:



ID: 18688

Version 1

Adjustable side rail with 2 top elements (choise manually or electrically adjustable).



ID: 19926

Version 2

Adjustable side rail with 1 top element. You can remove the top element if you drop down the side rail.



ID: 18568

Special version 3

Adjustable side rail with hinged top element. Attention: This version is only possible in combination with an electric side rail!

Benefits of electric adjustable sides

- Easy to use at the push of a button
- Lockable control element prevents unsupervised opening
- Can also be operated by people with disabilities
- Minimal operating strength required (pushbutton)
- Infinitely adjustable



ID: 19046



Knut

270° door to fold back completely

- Easy to use manually
- Doors on the head and foot elements fold back completely
- 270° version can also be supplied with firm skai-padding



„These are beastly good beds!“



ID: 16796



ID: 16017

Examples

Indication

Our children's therapy beds come in a choice of white painted or white stained (wood grain visible) finishes.



ID: 13623



ID: 19333



ID: 18732



ID: 19489

Knut

Optimum protection thanks to fixed skai-padding

Your child is very active? With the firmly integrated skai-padding (75 mm height), you offer your child optimum protection.

For more information on the different padding options, see page 69/ 70!

Our skai-padding is in many colours available!

You can find a pre-selection on our website at:

www.savi.de/skai-padding



ID: 20506



ID: 18581



ID: 16277



ID: 16923



ID: 18323





Optimal view thanks to integrated vinyl windows

The integrated vinyl windows fit flush with the firm skai-padding and thus offer a similar padding effect to the permanently integrated foam padding. The windows offer an optimal view. So you keep an eye on your child easily and your child feels visibly more comfortable.



ID: 20272

Tubing furnishing

On request, we manufacture all care beds, with tubing furnishing.



Edge padding



ID: 20595

Stick- / Framepadding

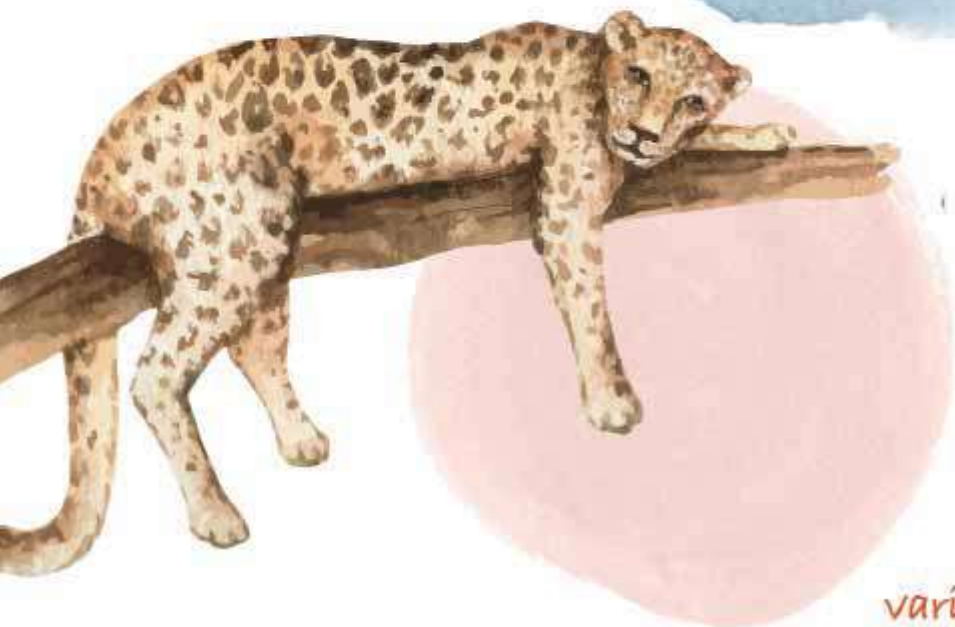


ID: 16763



ID: 16491

Knut (b) 40



Knut (b) 40's individual strengths

- 64 cm barred side height, by removable push-on element (40 cm barred height)
- Trendelenburg-/Antitrendelenburg-function
- Drawer/stowage (option)
- Adjustable barred sides on both sides (option)

Barred side heights

- barred side height 40 cm + push-on element 24 cm (total height 64 cm to comply with legal requirements)
- Slatted bed base 41 - 91 cm



variable and safe



adjustable side rails
on both sides (option)



low side rails
due to removable
push-on element
on both sides (option)



one side adjustable barred side
with 24 cm
push-on element
(standard)

Technical data

Lying area		External dimension	
90 x 200 cm (size L)		106,5 x 232 cm	
90 x 170 cm (size M)		106,5 x 202 cm	
Lying height		Barred side height	
Top of slatted bed base		64 cm bzw. 40 cm	
41 - 91 cm electric			
Adjustable side rail		Bar height	
(+14 cm external length)	manual	64 cm	99.710 •
	electric	64 cm	99.710EL +
2 adjustable side rails		Bar height	
(+14 cm external length)	manual	64 cm	99.711 +
	electric	64 cm	99.711EL +
Slatted bed base			
Manual adjustment		99.030 •	
Electric adjustment		99.200 +	
Trendelenburg- / Antitrendelenburg-function (sloping position)		•	

• = standard o.r. = on request + = accessories

Technical data

Kind of wood		
Beechwood „natural oiled“ (further colours see p. 69)		
Mattresses		
Polyfoam mattress		
Cold foam mattress	99.031.5	+
Reha-star mattress plus (up to stage 2)	99.031.3.PLUS	+
Reha-star mattress II (up to stage 4)	99.031.3.ZWEI	+
Incontinence cover	99.031.3ZA50	+
Coloured features		
Natural	90.100	n.a.c.
Yellow	90.128	n.a.c.
Orange	90.204	•
Blue-purple	90.405	n.a.c.
Dark-purple	90.406	n.a.c.
Blue	90.515	n.a.c.
Green	90.618	n.a.c.
Equipment		
Children's name on side of bed		n.a.c.
Coloured sticks		n.a.c.
Perspex instead of sticks		o.r.
Perspex in the lower area of the head / foot end (standard on C)		o.r.
Feed tube hole	99.840	o.r.
Raising aid	99.802	+
Sit up aid	99.820	+
2 drawers	99.040	+
Motor cover	99.803	+
Mattress holder	99.891	+
Protection for the bed base in case of kicks	99.892	+
Wood care set	99.880	+
Bluetooth control		
Padding		
Motifpadding Greta, 50 cm	99.050GRETA	+
Motifpadding Paul, 50 cm	99.050PAUL	+
Motifpadding Pauline, 50 cm	99.050PAULINE	+
Skai-padding 50 cm height	99.051	+
Fixed skai-padding	99.051.FEST	o.r.
Fixed skai-padding with vinyl windows	99.051.FEST	o.r.
Edge padding	99.052	+

• = standard o.r. = on request + = accessories n.a.c. = no additional charge



Savoir-vivre



Strong as an animal through everyday life – our ergonomic beds offer your child the ideal conditions for a healthy sleep.

This model combines safety with comfort. The electric lying-height adjustment is especially useful when it comes to the daily care of handicapped people.



Electric height
adjustment



Head- & footrest manual or
electric adjustment (option)



More info about
Savoir-vivre:
www.savi.de/beds/savoir-vivre

EN 60601-2-52
DIN EN 32623

According to Medical Devices Act
CE-Marking
Declaration of Conformity

Why a bed from SAVI?

- Great safety for your child
- Biologically neutral, pollutant-free (DIN EN 71-3)
- Stability and reliability
- Comfortable, back-friendly height electric
- Many bed sizes
- Individual equipment options
- Optimal eye contact with your child
- Large, safe indoor area
- Colourful padding for maximum protection
- Short delivery times

Savoir-Vivre's individual strengths

- Barred sides 60 - 220 cm (optional)
- Trendelenburg-/Antitrendelenburg-function version B (option)
- Drawer / stowage (option)



All SAVI-locks
available for even
greater security



Barred side height 60 cm
e.g. in green colour accent



Barred side height 100 cm
e.g. in blue colour accent



Barred side height 125 cm
e.g. in orange colour accent



Barred side height 150 cm
e.g. in dark-purple colour accent



Barred side height 170 cm
e.g. in blue-purple colour accent

Technical data

Lying area		External dimension	Article no.
100 x 200 cm		113 x 206 cm	please specify size
90 x 200 cm (size L)		103 x 206 cm	please specify size
90 x 170 cm (size M)		103 x 176 cm	please specify size
65 x 155 cm (size S)		78 x 161 cm	please specify size
Doors			
4-winged door to open the complete front			•
Four-winged door on both sides			99.750 +
270° door, door outwardly opening			99.704 +
270° door, door outwardly opening on both sides			99.704BEID +
Locking mechanism			
Child-proof SAVI-lock I			•
Child-proof SAVI-lock I metal			40100003 +
SAVI-lock II			99.033 +
SAVI-lock III			99.034 +
SAVI-lock IV			99.034A +
Lying height (top of slatted bed base)			
40 - 80 cm electric height adjustment			•
Barred side height	Overall height		
60/70 cm	110 cm		110.50.504.99101
100/110 cm	150 cm		150.50.504.99101
	for size 90 x 170 cm		
125/135 cm	175 cm		175.50.504.99101
	for size 90 x 170 cm		
150/160 cm	200 cm		200.50.504.99101
170/180 cm	220 cm		220.50.504.99101
Special sizes on request			
Slatted bed base			
Manual adjustment			99.030 •
Electric adjustment			99.200 +
Trendelenburg-/Antitrendelenburgfunktion B (Schrägstellung der Liegefläche)			99.213 +
Running gear			
Four castor running gear with total locking mechanism			99.887 +
Designer wooden castors			99.886 +
Cut out on the front side (notify height please)			99.830 n.a.c.
Kind of wood			
Pinewood			n.a.c.
Beechwood „natural oiled“ (further colours see p. 69)			•
Mattresses			
Polyfoam mattress			•
Cold foam mattress			99.031.5 +
Reha-star mattress plus (up to stage 2)			99.031.3.PLUS +
Reha-star mattress II (up to stage 4)			99.031.3.ZWEI +
Incontinence cover			99.031.3ZA50 +

• = standard o.r. = on request + = accessories n.a.c. = no additional charge

Technical data

Coloured features		
Natural	90.100	n.a.c.
Yellow	90.128	n.a.c.
Orange	90.204	n.a.c.
Blue-purple	90.405	n.a.c.
Dark-purple	90.406	n.a.c.
Blue	90.515	n.a.c.
Green	90.618	•
Equipment		
Children's name on side of bed		n.a.c.
Coloured sticks		n.a.c.
Perspex instead of sticks		o.r.
Feed tube hole	99.840	o.r.
External lock on side of bed	99.706	+
Raising aid	99.802	+
Sit up aid	99.820	+
Net-roof	99.800	+
Adaption of the bed for sloping ceiling		o.r.
Mattress holder	99.891	+
Protection for the bed base in case of kicks	99.892	+
Wood care set	99.880	+
Padding		
Motifpadding Greta, 50 cm	99.050GRETA	+
Motifpadding Paul, 50 cm	99.050PAUL	+
Motifpadding Pauline, 50 cm	99.050PAULINE	+
Skai-padding 50 cm height	99.051	+
Skai-padding 100 cm height	99.051.100	+
Fixed skai-padding	99.051.FEST	o.r.
Fixed skai-padding with vinyl windows	99.051.FEST	o.r.
Edge padding	99.052	+

• = standard o.r. = on request + = accessories n.a.c. = no additional charge

Our skai-padding is in many colours available!

You can find a pre-selection on our website at:

www.savi.de/skai-padding



Savoir-Vivre

Key data of Savoir-Vivre

- Barred side height 60 - 170 cm, other heights on request
- Electric lying height 40 - 80 cm
- Four-winged sliding door
- Four-casters running gear (option)
- Child-proof SAVI-lock
- Perspex (optiona)

Heights

Barred side	Door	Total
• 60 cm	• 70 cm	• 110 cm
• 100 cm	• 110 cm	• 150 cm
• 125 cm	• 135 cm	• 175 cm
• 150 cm	• 160 cm	• 200 cm
• 170 cm	• 180 cm	• 220 cm

Locking of doors



external lock on side of bed (option)

heavy,
massive,
good

Cut out



Height: 8 cm
(other heights are possible, e.g. for use of patient lifts)

great
for the
back



Total heights: 110 cm | 150 cm | 175 cm | 200 cm | 220 cm



Examples



ID: 18384
2 x SAVI-lock IV



ID: 17448
coloured sticks



ID: 18579
stained white



ID: 16662
all perspex



ID: 18454
drawers

Savoir-Vivre

Optimum protection thanks to fixed skai-padding

Your child is very active? With the firmly integrated skai-padding (75 mm height), you offer your child optimum protection.

For more information on the different padding options, see page 69/70!



ID: 18629



ID: 19140



ID: 19037



ID: 19833



ID: 19778

Our skai-padding is in many colours available!
You can find a pre-selection on our website at:
www.savi.de/skai-padding



Optimal view thanks to integrated vinyl windows

The integrated vinyl windows fit flush with the firm skai-padding and thus offer a similar padding effect to the permanently integrated foam padding. The windows offer an optimal view. So you keep an eye on your child easily and your child feels visibly more comfortable.



ID: 19593



ID: 17934



ID: 19931



ID: 18542

Jonas



On a dream journey with Jonas – our handmade beds offer your child an unmistakable sleeping comfort and particularly beautiful dreams.

This bed offers a high degree of safety. Guaranteed by the high barred sides and our proven SAVI-lock.



EN 60601-2-52
DIN EN 32623

According to Medical Devices Act
CE-Markering
Declaration of Conformity

Why a bed from SAVI?

- Great safety for your child
- Biologically neutral, pollutant-free (DIN EN 71-3)
- Stability and reliability
- Comfortable, back-friendly height electric
- Many bed sizes
- Individual equipment options
- Optimal eye contact with your child
- Large, safe indoor area
- Colourful padding for maximum protection
- Short delivery times



ID: 11071
Barred side height 110 cm
e.g. with drawers,
in blue colour accent

Jonas' individual strengths

- Cost-effective, as no height adjustment is required
- Barred side 60 - 220 cm (option)
- Drawer / stowage (option)



Choice of colours (see on page 68)



Barred side height 100 cm
e.g. in blue colour accent

Technical data

Lying area	External dimension	Article no.
100 x 200 cm	113 x 206 cm	
90 x 200 cm	103 x 206 cm	
Doors		
4-winged door to open the complete front		•
Four-winged door on both sides	99.750	+
270° door, door outwardly opening	99.704	+
270° door, door outwardly opening on both sides	99.704BEID	+
Locking mechanism		
Child-proof SAVI-lock I		•
Child-proof SAVI-lock I metal	40100003	+
SAVI-lock II	99.033	+
SAVI-lock III	99.034	+
SAVI-lock IV	99.034A	+
Lying height (top of slatted bed base)		
50 cm		•
Barrel side height		
Overall height		
100 cm	150 cm	150.50.004
125 cm	175 cm	175.50.004
Special sizes on request		
Slatted bed base		
Manual adjustment	99.030	+
Electric adjustment (keine Höhenverstellung)	99.200	+
Running gear		
Four castor running gear with total locking mechanism		o.r.
Designer wooden castors		o.r.
Kind of wood		
Pinewood		n.a.c.
Beechwood „natural oiled“ (further colours see p. 69)		•
Mattresses		
Polyfoam mattress	99.031.4	•
Cold foam mattress	99.031.5	+
Reha-star mattress plus (up to stage 2)	99.031.3.PLUS	+
Reha-star mattress II (up to stage 4)	99.031.3.ZWEI	+
Incontinence cover	99.031.3ZA50	+

• = standard o.r. = on request + = accessories n.a.c. = no additional charge



Technical data

Coloured features		
Natural	90.100	n.a.c.
Yellow	90.128	n.a.c.
Orange	90.204	n.a.c.
Blue-purple	90.405	n.a.c.
Dark-purple	90.406	n.a.c.
Blue	90.515	•
Green	90.618	n.a.c.
Equipment		
Children's name on side of bed		n.a.c.
Coloured sticks to go to the coloured feature		n.a.c.
Perspers instead of sticks		o.r.
External lock on side of bed	99.706	+
Feed tube hole	99.840	o.r.
Raising aid	99.802	+
Adaption of the bed for sloping ceiling		o.r.
2 drawers	99.040	+
Mattress holder	99.891	+
Protection for the bed base in case of kicks	99.892	+
Wood care set	99.880	+
Padding		
Motifpadding Greta, 50 cm	99.050GRETA	+
Motifpadding Paul, 50 cm	99.050PAUL	+
Motifpadding Pauline, 50 cm	99.050PAULINE	+
Skai-padding 50 cm height	99.051	+
Skai-padding 100 cm height	99.051.100	+
Fixed skai-padding	99.051.FEST	o.r.
Fixed skai-padding with vinyl windows	99.051.FEST	o.r.
Edge padding	99.052	+

• = standard o.r. = on request + = accessories n.a.c. = no additional charge

Our skai-padding is in many colours available!

You can find a pre-selection on our website at:

www.savi.de/skai-padding



Jonas

Key data of Jonas

- Barred side height 100 - 125 cm, or even higher (i.e. 220 cm) available
- Fixed lying height 50 cm (entrance height)
- Drawers (optional)
- Child-proof SAVI-lock
- Perspex (option)



ID: 18397
Lower section perspex,
and top section sticks



ID: 16167
drawers, castors



ID: 16060
drawers



ID: 11071
perspex

Examples



ID: 15717
net-roof



ID: 19873
back element with fixed
skai-padding

"I don't put my head
in the sand -
I put it on a
comfortable pillow."



ID: 15606
Adaption of the bed
for sloping ceiling

Lola



Small heroes very big – Lola is the ideal bed for toddlers.

This bed is ideal for small children because it has a fixed, high basic lying height, making nursing more comfortable.

Its also easy on the back, thereby seeing to restful sleep.



**EN 60601-2-52
DIN EN 32623**

**According to Medical Devices Act
CE-Markering
Declaration of Conformity**

Why a bed from SAVI?

- Great safety for your child
- Biologically neutral, pollutant-free (DIN EN 71-3)
- Stability and reliability
- Comfortable, back-friendly height electric
- Many bed sizes
- Individual equipment options
- Optimal eye contact with your child
- Large, safe indoor area
- Colourful padding for maximum protection
- Short delivery times

Lola's individual strengths

- Good working height / slatted bed base 85 cm
- Cupboards (option)



Choice of colours (see on page 68)

door open
→



barred side height 65 cm
z.B. im Farbakzent grün



barred side height 65 cm and cupboards
e.g. in green colour accent

Technical data

Lying area	External dimension	Article-no.
100 x 200 cm	113 x 206 cm	
90 x 200 cm	103 x 206 cm	
Doors		
4-winged door to open the complete front		•
Four-winged door on both sides	99.750	+
270° door, door outwardly opening	99.704	+
270° door, door outwardly opening on both sides	99.704BEID	+
Locking mechanism		
Child-proof SAVI-lock I		•
Child-proof SAVI-lock I metal	40100003	+
SAVI-lock II	99.033	+
SAVI-lock III	99.034	+
SAVI-lock IV	99.034A	+
Lying height (top of slatted bed base)		
85 cm		•
Barred side height		
65 cm	150 cm	150.85.002 •
90 cm	175 cm	175.85.002 +
Special sizes on request		+
Slatted bed base		
Manual adjustment	99.030	+
Electric adjustment	99.200	+
Running gear		
Four castor running gear with total locking mechanism		o.r.
Designer wooden castors		o.r.
Kind of wood		
Pinewood		n.a.c.
Beechwood „natural oiled“ (further colours see p. 69)		•
Mattresses		
Polyfoam mattress	99.031.4	•
Cold foam mattress	99.031.5	+
Reha-Star Plus (Stadium 2)	99.031.3 PLUS	+
Reha-Star II (Stadium4)	99.031.3.ZWEI	+
Incontinence cover	99.031.3.ZA50	+

• = standard o.r. = on request + = accessories n.a.c. = no additional charge

Technical data

Coloured features		
Natural	90.100	n.a.c.
Yellow	90.128	•
Orange	90.204	n.a.c.
Blue-purple	90.405	n.a.c.
Dark-purple	90.406	n.a.c.
Blue	90.515	n.a.c.
Green	90.618	n.a.c.
Equipment		
Children's name on side of bed		n.a.c.
Coloured sticks to go to the coloured feature		n.a.c.
Perspers instead of sticks		o.r.
External lock on side of bed	99.706	+
Feed tube hole	99.840	o.r.
Raising aid	99.802	+
Sit up aid	99.820	+
Adaption of the bed for sloping ceiling		o.r.
Cupboards (2 pieces)	99.041	+
Mattress holder	99.891	+
Protection for the bed base in case of kicks	99.892	+
Wood care set	99.880	+
Padding		
Motifpadding Greta, 50 cm	99.050GRETA	+
Motifpadding Paul, 50 cm	99.050PAUL	+
Motifpadding Pauline, 50 cm	99.050PAULINE	+
Skai-padding 50 cm height	99.051	+
Fixed skai-padding	99.051.FEST	o.r.
Fixed skai-padding with vinyl windows	99.051.FEST	o.r.
Edge padding	99.052	+

• = standard o.r. = on request + = accessories n.a.c. = no additional charge



Lola

Key data of Lola

- barred side height of 65 - 90 cm, other heights on request
- Fixed lying height 85 cm
- Child-proof SAVI-lock
- Cupboards (option)
- Perspex (option)



ID: 17042
fixed skai-padding in white



ID: 15875
barred sides adjustable



ID: 16211
lying area 100 x 100 cm,
barred side height 40 cm



ID: 19014
head element and barred side
to open with hinged element



ID: 18804
white painted

"I like to dream
about my friends
and the beach."



ID: 19540
tubing with sliding perspex



ID: 13874
cupboards



ID: 17769
all sticks

Felix



As flexible as Felix - the therapeutic couch without limits

This therapeutic couch offers your child a large therapeutic area and a low entry height. This makes the therapy particularly pleasant for parents, carers and children. It also conceals sufficient storage space for therapy needs and much more.

Its homely design and disinfectability makes Felix thoroughly suitable for everyday use.



More info about
Felix:
www.savi.de/beds/felix

According to Medical Devices Act
CE-Markering
Declaration of Conformity

Felix

Felix' individual strengths

It is often the small practical aids that decide whether something is good or bad in everyday use. As manufacturers of furniture for rehabilitation purposes, we have incorporated this valuable experience in the design of our new therapeutic bed. The result is a multifunctional couch in a design that appeals to children.

Handy: storage box for utensils like, for example, blankets and preparations

Materials: Powder-coated tubular steel frame, padded lying surface: Skai cover

Technical data - Felix (a)

Therapeutic couch | (max. load 140 kg)

Lying area (min. 130 x 100 cm, max. 218 x 100 cm)

Article-no.

Without castors, height adjustment 68 - 103 cm

9910.68103

Castors, height adjustment 75 - 110 cm

9910.75110





Technical data – Félix (b)

Therapeutic couch | (max. load 150 kg)

Lying area (min. 172,5 x 100 cm, max. 261 x 100 cm)

Article-no.

Without castors, height adjustment 45 - 86 cm

9911.4586

Castors, height adjustment 52 - 93 cm

9911.5293

Therapeutic couch no folding sides (only fixed lying area)

Lying area:

Article-no.

70 x 140 cm

9911.529370140

90 x 170 cm

9911.529390170

90 x 200 cm

9911.529390200

100 x 200 cm

9911.5293100200

Without castors, height adjustment of 45 - 86 cm

n.a.c.

Castors, height adjustment of 57 - 93,5 cm

•

• = standard n.a.c. = no additional charge



Travel bed

Why you should purchase our travel bed

Our travel bed is made of beech wood. Quick assembly with fewer screws simplifies assembly. Our travel bed consists of:

- 1 beechwood frame
- 1 net-element, very tear-resistant
- anti-climb protection integrated
- 1 bag

Remarkable features of our travel bed

- Dismantled size: 120 x 15 x 20 cm (l x w x h), packed in a bag without mattress
- Mounted size: 196 x 76 x 120 cm (l x w x h)
- Total weight: 13 kg

Technical data

Lying area	Barred side height	Article-no.
SAVI-travel bed 70 x 190 cm	120 cm	120.070.01.05
Mattress 70 x 190 cm, 3-fach		+
Net in black		
Net in blue		
Net in pink		

• = standard + = accessories



Practically packed
in a bag

3-part mattress
(option)



Babywalker

Why you should purchase our babywalker

Super for learning to walk! Load into, unload, transport! The child is able to transport himself!



Order this
article directly
in our
Online-Shop:
www.lilliwood.de



Remarkable features of our Babywalker



Height adjustable
hand grip



Light castors



Sharpening brake

Technical data

Height	Width	Length	
84 cm	54 cm	70 cm	•
Running gear			
4 Light castors with sharpening brake			
Storage box			
Large loading area			
Hand grip			
Height adjustment, so that the walker grows			
Load			
Up to 30 kg			
Surface			
According to DIN 71-3 (security for toys)			

• = standard + = accessories

Accessories

Equipment, which makes nursing easier



Wood care set



Easy-close-mechanism



Touch protection



Cut out



SAVI-lock I



SAVI-lock II



SAVI-lock III



SAVI-lock IV



Electric adjustable side rail



270° door



Removable corner posts



Protection for the bed base



Accessories



Children's name



Coloured sticks



Motor cover



Drawers



External lock on side of bed



Net-roof



Feed tube hole with sliding mechanism



Feed tube hole



Entrance help



Raising aid



Play trainer wood



Play trainer metal



Slatted bed base

Slatted bed base no adjustment (fixed):

Slats frame with individual central zone reinforcement.



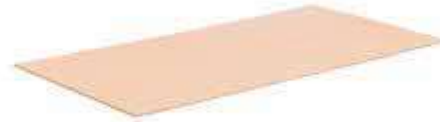
Electric slatted bed base (no height adjustment):

Continuously variable hardness regulation with electric adjustment of the head, torso, pelvic, knee and foot



Fixed slatted bed base:

Base plate made of plywood (no bed frames).



Penetration protection wood

Installation above the bar frame to the slats.



very simple
and clear

Penetration protection metal

Mounted below the slatted frame. Spring action and reclining comfort are maintained.



1 Polyfoam mattress

Material: Pu foam

Strength: Density (35 kg/m³)

Reference substance: Blue elastic cover in cotton fabric (at 60 °C washable), optionally also in difficult flammable execution.

Overall height
of the mattress: ca. 12 cm

2 Cold foam mattress

Height: Approx. 14 cm

Coating: Double jersey (65% polyester, 35% viscose)

Padding: On both sides ca. 350 g/m² climate fiber (100% polyester), fleece

Care: Cover removable by 4-sided zipper. Halves divisible and individually washable up to 60°C in gentle cycle with mild detergent, suitable for tumble dryers.

Core: 7-zones-Ortho-cel®-cold-foam-core (height of core approx. 12 cm)

Incontinence cover

Fabric: 100% polyester

Coating: 100% polyurethan

Supple, skin-friendly, anti-allergic, bacteria-proof, resistant to blood, urine, oil, grease, disinfectants

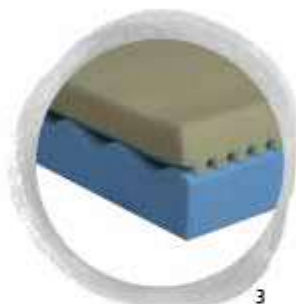
Care: Machine wash 95 °C suitable



1



2



3



4

3 Reha-Star mattress plus up to stage 2 (nach Prof. Seiler)

Anti decubitus systems

Thermally reprocessed by RKI guidelines

- Hyper Elastic foam core with transverse and longitudinal sections
- 2-ply
- Ventilation channels for optimum microclimate
- Optimal pressure relief and reduction of shear forces (under 18mm/Hg print run)
- PU-Tex reference abnehmbare washable up to 95°C + wipe disinfection
- Mattress autoclavable
- Permeable to water vapor
- Flame-retardant according to DIN EN 597 (part 1 + 2) agreed
- 20 to 100 kg of patient weight
- Suitable for pain therapy

4 Reha-Star mattress II up to stage 4 (nach Prof. Seiler)

Thermally reprocessed by RKI guidelines

- Hyper Elastic foam core with transverse and longitudinal sections
- 3-ply
- Ventilation channels for optimum microclimate
- Optimal pressure relief and reduction of shear forces (under 18mm/Hg print run)
- PU-Tex reference abnehmbare washable up to 95°C + Wipe disinfection
- Mattress autoclavable
- Permeable to water vapor
- Flame-retardant according to DIN EN 597 (part 1 + 2) agreed
- 20 to 120 kg of patient weight
- Suitable for pain therapy

Range of colours

examples for coloured features:



blue (article-no. 90.515)



blue-purple (article-no. 90.405)



dark-purple (article-no. 90.406)



orange (article-no. 90.204)



yellow (article-no. 90.128)



natural (article-no. 90.100)



green (article-no. 90.618)

Get to know our range of colour.



blue	blue-purple	dark-purple	orange	yellow	natural	green
(article-no. 90.515)	(article-no. 90.405)	(article-no. 90.406)	(article-no. 90.204)	(article-no. 90.128)	(article-no. 90.100)	(article-no. 90.618)

Make your choice ...

- choose modell
- choose size
- choose equipment
- choose the colour

Do not hesitate to contact us in case of special requests!



Padding

Thanks to individual production, we can offer you the right cushioning for each specific need.

Our skai-padding is in many colours available!

You can find a preselection on our website at: www.savi.de/skai-padding

We will gladly send you the current colour selection.



Technical data

Padding thickness skai-padding 3 mm	
Skai-padding 50 cm	99.051
Skai-padding 100 cm	99.051.100
Skai-padding with vinyl windows	
Motifpadding Greta, 50 cm	99.050GRETA
Motifpadding Paul, 50 cm	99.050PAUL
Motifpadding Pauline, 50 cm	99.050PAULINE
Fixed skai-padding 50 cm	99.051.FEST
Fixed skai-padding with vinyl windows	99.051.FEST
Edge padding	99.052

Great paddings
that fit really well

Wood colours

Our beds are available in many wood colours. As an alternative to „natural oiled“, the beech wood is treated with the desired colour glaze – all possibilities are biologically neutral and free of harmful substances according to DIN EN 71-3 (safety of toys)!

As wood is a natural raw material, every bed looks different. Your bed will be a real unicum!



basalt
(90.953)

wenge
(90.950)

barrel
(90.954)

teak
(90.952)

beech
„natural oiled“
(90.952)

Motifpadding

Our motifpadding is easy with cords at the bars of the bed fixed.



Greta



Paul



Pauline

Padding

Bound skai-padding

Our skai-padding variants includes all listed below!

Skai-padding ...

... with Velcro-fixing, height adjustmend possible! The Velcro webs are attached to the sticks.



... is using cords on the side Sticks attached. Due to the positioning of the cords always flexible giben the optimal fixation.



... for fixing with adhesive Velcro.



Fixed skai-padding

Fixed skai-padding, padding is screwed at the cot, cot-dimensions adapted so that you can use the adjustment. Attention: can only be retrofitted at Little Mila!



Fixed skai-padding with vinyl windows

The skai-padding is framing a vinyl-window. You and your child have a perfect view.



Edge padding

The padding around the edges to protect against injury.



Fixed skai-padding with edge padding

Combine the fixed skai-padding with the edge padding.



Sticks- and Frame-skai-padding

Example pictures: please see page 35. All our children's care beds are available with special versions of skai-padding.



Create your own SAVI®-children's bed!

Create your children's bed for rehabilitation!

This is a list which you can use to create your children's bed for rehabilitations. We will take your wishes into consideration and make an offer about one of our beds.

Just make a cross and decide how your bed should look like:

1. Lying area of the bed?

- ☐ 65 x 155 cm ☐ 70 x 140 cm ☐ 90 x 170 cm
☐ 90 x 200 cm ☐ 100 x 200 cm other size: _____

2. Which barred side do you need? Height (cm): _____

3. Do you use a patient-lifter? ☐ Yes ☐ No

4. Which lying height (top of slatted base) do you need?

- ☐ 40 cm ☐ 50cm ☐ 60 cm ☐ 70 cm other height: _____

5. Do you need an electric height adjustment? ☐ Yes ☐ No

6. Which slatted bed base do you need?

- ☐ no adjustment ☐ manual adjustment ☐ protection for the bed base
☐ electric adjustment ☐ Trendelenburg function

7. What kind of doors do you want?

- ☐ 4-winged door ☐ 270° door ☐ folding door
☐ adjustable side rail ☐ electric adjustable side rail

8. How many doors do you need?

- ☐ front side ☐ front and back sides ☐ head and footelement

9. Locking mechanism?

- ☐ SAVI-lock I ☐ SAVI-lock II ☐ SAVI-lock III ☐ SAVI-lock IV

10. Do you need perspex?

- ☐ Yes. Where?: _____ ☐ No

11. Kind of wood/wood-colour? Wood:

- ☐ beech ☐ pine
 Wood-colour: ☐ natural ☐ basalt ☐ wenge ☐ barrique ☐ teak

12. Colour feature?

- ☐ natural ☐ yellow ☐ orange ☐ blue-purple ☐ dark-purple ☐ blue
☐ green ☐ white stained ☐ white lacquered ☐ other colour: _____
☐ coloured sticks ☐ children's name: _____

13. Running gear? ☐ wheels ☐ without wheels

14. Do you want containers? ☐ Yes ☐ No

15. Do you want a mattress? ☐ Yes ☐ No

If yes, which one?

- ☐ polyfoam mattress ☐ interior spring mattress ☐ cold foam mattress
☐ Reha-Star II ☐ Reha-Star Plus ☐ intercontinence cover

16. Do you need a padding? ☐ Yes ☐ No

If yes, which one?

- ☐ skai-padding ☐ fixed skai-padding ☐ skai-padding for the top edge of the cot
 motif-padding: ☐ Pauline ☐ Paul ☐ Greta

height of the padding: _____ colour of the padding: _____

17. Do you need Vinyl-windows?

- ☐ Yes. Where? _____ ☐ No

18. Equipment?

- ☐ touch-protection ☐ net-roof ☐ raising aid ☐ motor cover (Knut)
☐ mattress-support ☐ side up aid ☐ feed tube hole ☐ removeable posts (Niklas)
☐ feed tube hole (Lexan)

☐ Please use this statements to create an offer, where you choose a model, which fulfils the handicaps to the greatest possible extent.

☐ Please use this statements to create an offer about a special model to fulfil the handicaps exactly.

place, date

stamp, sign

Very easy:

Just send us your order via eMail
 or use our online-form at: www.savi.de

SAVI GmbH Reha Solutions

Lise-Meitner-Str. 10 Fon: +49 (0) 25 64 - 93 09-70
 D-48691 Vreden Fax: +49 (0) 25 64 - 93 09-60





Your dealer:

SAVI GmbH Reha Solutions
Lise-Meitner-Straße 10
D-48691 Vreden
Fon: +49 (0) 25 64 - 93 09 - 70
Fax: +49 (0) 25 64 - 93 09 - 60
www.savi.de
info@savi.de
Facebook: SAVI.GmbH