



Quick Reference Guide

Toto[®] Lateral Turning System, with Toto[®] Touch Control Unit





This Quick Reference Guide has been produced to assist Healthcare Professionals and other users with the functional aspects of the system. This guide does not replace the general safety warnings, cautions and recommendations provided in the Toto® Lateral Turning System, with Toto® Touch Control Unit User Guide.

Healthcare providers and carers are often required to reposition their patients every 4 hours; morning noon and night, so to reduce the risk of the development of pressure ulcers. This can be very time consuming, ineffective, be a drain on resources, can introduce personal risk to staff and patients, and might not be well tolerated.

Toto is an automatic lateral turning system designed to assist with patient turning. Consisting of a digital control unit and turning platform which is fitted beneath the patient's mattress, Toto automatically turns patients relieving pressure over their most vulnerable areas.

Unlike other patient turning systems, Toto provides regular and consistent complete body turning in a lightweight, easy to use, set up and access format.

Installation

Place and centralise the platform directly onto the bed frame and then place the mattress or mattress system directly on top.

⚠ IMPORTANT The platform should be free to inflate. Please ensure that each side of the platform can freely inflate and not be restricted by the mattress or the bed frame.

Toto Touch Control Unit

Using the bed hooks located on the rear of the control unit, securely hang on the footboard of the bed. Alternatively, position on any stable horizontal surface. Connect to mains power via the power lead supplied.




⚠ IMPORTANT A Healthcare Professional should determine inflation and rest durations.

⚠ ATTENTION!

FOR CLINICIANS AND CARERS USE ONLY

Please tick the following options once installed to indicate the settings selected on the Toto Touch® Control Unit.

AIR CELL SIDE SELECTION

-  L&R
-  R
-  L

INFLATE TIME

- 240 min
- 180 min
- 120 min
- 60 min
- 30 min

REST TIME

- 30 min
- 60 min
- 120 min
- 180 min
- 240 min

Connecting the Platform to the Control Unit

Using the quick connectors, connect the grey inflation hoses to the platform air cell hoses – red to red.

Connect the grey inflation hoses to the control unit.

Check the CPR deflation valves are securely in place.

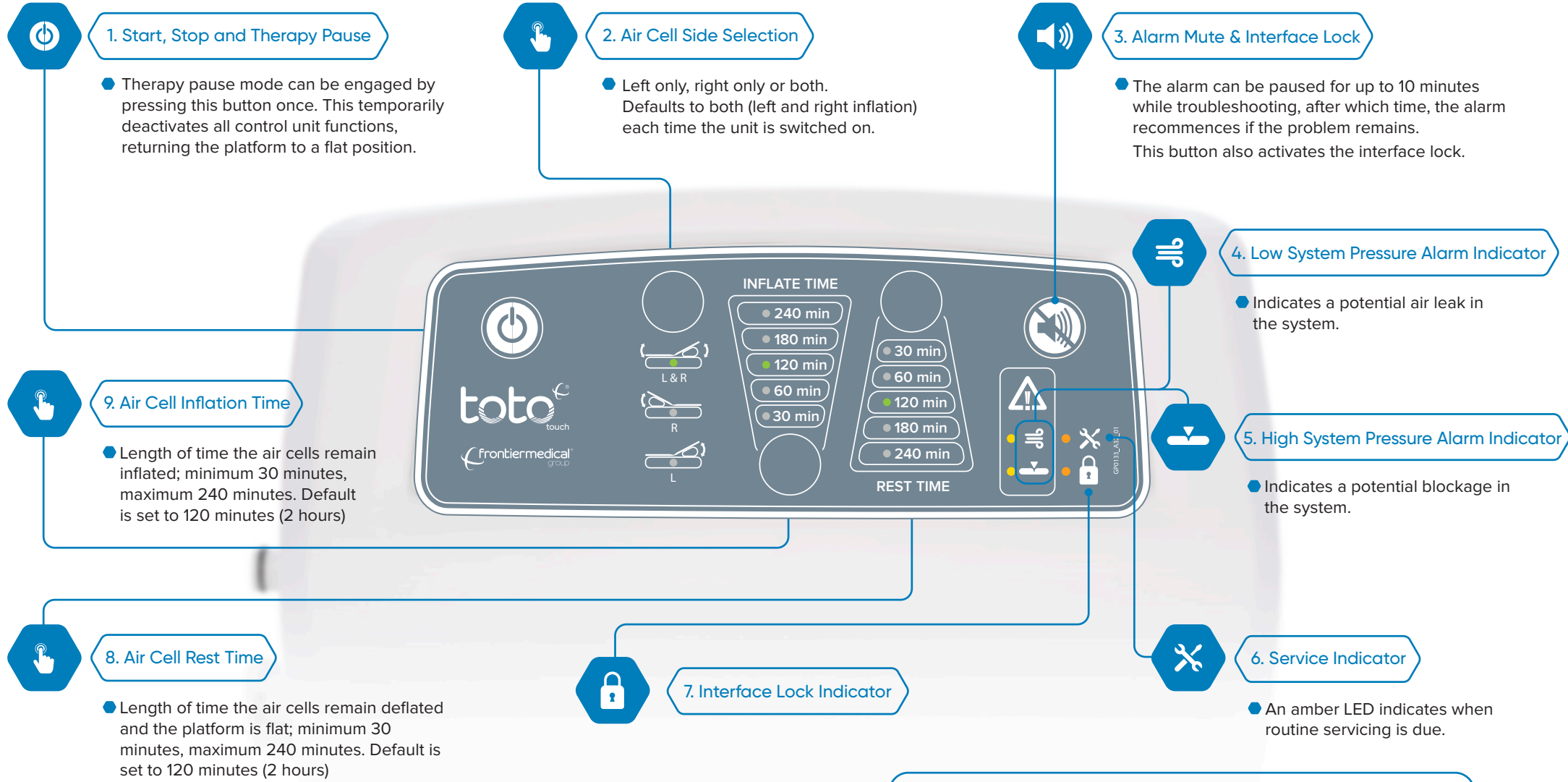
Operating Instructions

1. To turn the unit on, press and hold the power button (1) for three seconds.
The default settings are:
Air cell side selection (2) – both sides
Air cell inflation time (9) – 120 minutes
Air cell rest time (8) – 120 minutes
2. To change the default settings, press the button to scroll through the LED lit options until you have arrived at your preferred choice.
3. Air cell inflation begins, and each side remains inflated for the duration that is selected.

Note - If the control unit is 'turned off' it reverts to the default settings when switched back on. Reselect the preferred options using the above instructions.

Cleaning and Care

All components can be cleaned and decontaminated with either a 0.1% or 1% chlorine-based solution when followed by a thorough rinse with clean water. Please ensure that the control unit is switched off and unplugged before cleaning begins.









! For further information on the system alarms, please refer to the Trouble Shooting Guide overleaf.



Scan to watch

Watch the Toto Quick Reference Guide Video
<https://youtu.be/LcAdJZTFbVo>

System Error Trouble Shooting Guide

| Problem | Cause | Initial Checks / Trouble Shooting |
|---|---|---|
|  No LEDs lit; no audible alarm. | <ul style="list-style-type: none"> Control unit may not be attached to a power source. Fuse may need replacing. | <ul style="list-style-type: none"> Check the control unit is connected to an active mains power outlet which is switched on. Check the control unit is switched on. If following points 1 and 2 does not resolve the problem, switch off and unplug the control unit: <ul style="list-style-type: none"> Check the mains plug fuse (3A). Check the control unit fuse (1A). Restart the control unit. |
|  Low pressure alarm LED (4) permanently lit yellow; an audible alarm can be heard. | <ul style="list-style-type: none"> Pressure has fallen below the minimum operational requirements. | <ul style="list-style-type: none"> Press the alarm mute button. Check the CPR valve is properly closed, ensuring all sealing connectors are fully pressed in. Check each air cell is securely attached to the connecting air cell hose. Check all air cells and hoses for any air leakage. |
|  High pressure alarm LED (5) permanently lit yellow; an audible alarm can be heard. | <ul style="list-style-type: none"> Air flow between the control unit and the platform is obstructed. | <ul style="list-style-type: none"> Press the alarm mute button. Check for twists or kinks in the air hoses between the platform and control unit. Resolve and wait for the alarm to reset. |
|  Service LED (6) permanently lit amber. | <ul style="list-style-type: none"> Service required. | <p>Please contact Frontier Therapeutics Customer Services for support Tel. +44 (0)330 460 6030 The Control Unit will continue to function even though the service LED remains lit.</p> |
|  Interface panel is lit but unresponsive. | <ul style="list-style-type: none"> Interface panel is locked. | <ul style="list-style-type: none"> Check that screen lock LED is lit amber (9). Press and hold the alarm mute button for four seconds. |
|  Audible alarm sounding; no LEDs lit. | <ul style="list-style-type: none"> Accidental removal of power lead. Accidental mains wall power is turned off. Mains power failure. | <ul style="list-style-type: none"> Reconnect mains power lead to the control unit. Check the mains power wall switch is turned on. Attempt to restart the control unit. |



Trouble Shooting Not Working?

If you require any further assistance with the trouble shooting or repair of your Toto System please call the number below.

Additional information can be found on our website www.frontier-group.co.uk



Frontier Therapeutics Limited
Innova One, Tredegar Business Park, Tredegar,
Blaenau Gwent NP22 3EL United Kingdom.

Tel: +44 (0)330 460 6030
Email: info@frontier-group.co.uk

