

## Avantgarde Teen 2 VR

Order no.:

-----

## Avantgarde Teen 2 VR

Active wheelchair  
for children

Article number: 480F45=40000\_K



### Standard equipment

- Aluminium tube frame with crossbrace
- Abduction frame (6 cm) can be selected
- Aluminium leg support, choice between single-panel leg support or individual leg supports
- Back support with different height setting options and adaptable upholstery
- Aluminium side panels
- Rear frame can be adapted to grow with the user (SD 30 cm–34 cm, SD 36 cm–40 cm)
- Drive wheels with quick-release axles
- Knee lever wheel lock with adaptable operating lever

Folding, max. user weight 90 kg/198 lbs

<input type="checkbox"/> <b>Provide estimate only</b>		<input type="checkbox"/> <b>Order</b>	
<input type="checkbox"/> <b>Attachment for custom fabrication enclosed</b>			
Billing address/customer number			
Delivery address			
Sales person		Name	
		.....	
		Date	Signature
<p>By placing the order, you agree to comply with the instructions for use/service manuals for accessories and products of other manufacturers when combining them with an Ottobock product, in addition to the instructions for use/service manuals of the respective Ottobock products. Also you confirm to have read, understood and accepted, our general terms and conditions. In addition, you agree, upon placing an order, to conduct your own conformity assessment or approval in accordance with national requirements if and when you implement modifications or attachments that do not meet the specifications of Ottobock instructions for use/service manuals.</p>			

### Seat measurements in cm\*

Seat width SW    ☐ 26    ☐ 28    ☐ 30    ☐ 32    ☐ 34    ☐ 36

Seat depth SD    ☐ 30    ☐ 32    ☐ 34    ☐ 36    ☐ 38    ☐ 40

### Anterior seat height in cm\*

☐ 42    ☐ 43    ☐ 44    ☐ 45    ☐ 46    ☐ 47    ☐ 48    ☐ 49    ☐ 50    ☐ 51

### Front frame type

MA 01    ☐ **Standard**

MA 06    ☐ **Abduction 6 cm**

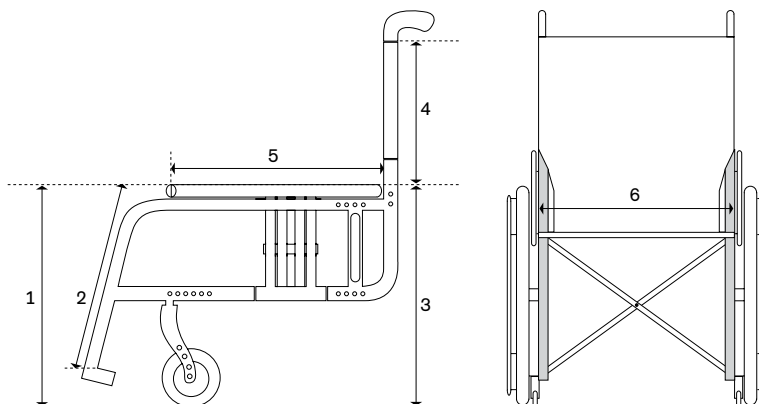
\*see further information on the next page

**The number codes contained in this order form are not intended to be used as article numbers for spare parts orders.  
Please use the spare parts catalogue for spare parts orders.**

## Information

### Wheelchair measurements\*

- 1 Anterior seat height (ASH)  
= ground to top of seat upholstery
- 2 Lower leg length (LL)  
= top of seat upholstery to top of foot plate  
(without seat cushion)
- 3 Posterior seat height (PSH)  
= ground to top of seat upholstery
- 4 Back support height (BH)  
= top of seat tube (crossbrace) to top of back support  
upholstery
- 5 Seat depth (SD)  
= front of seat upholstery to back support tube
- 6 Seat width (SW)  
= outside edge of frame tube to outside edge of frame  
tube



\* This information will help to support user-oriented settings and product development. Ottobock guarantees the confidential and purely internal use of these data. A manufacturing tolerance of 10 mm applies to all measurements.

#### Seat height table

##### Anterior seat height

Caster fork, short	Adjustment range in cm
Caster wheel diameter 4"	42 – 45
Caster wheel diameter 5"	43 – 46
Caster wheel diameter 5.5"	44 – 47
Caster wheel diameter 6" pneumatic	45 – 48

The values indicated are rounded values which have been theoretically determined. Max. deviation of 1 cm. The anterior seat height depends on the selected wheel size, caster fork and mounting position. Please refer to the seat height table!

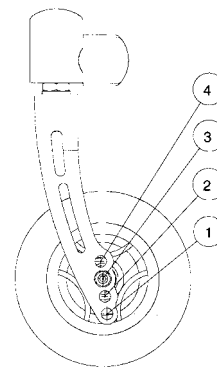
When using the adapter for high anterior seat height, add +3.5 cm to all values.

When using the adapter for low anterior seat height, subtract 3.5 cm from all values.

Specified without seat cushion at 0° seat inclination.

Horizontal position of the drive wheel attachment device: see sketch.

The posterior seat height (PSH) depends on the selected wheel size and mounting position in the drive wheel attachment device. Please refer to the seat height table!

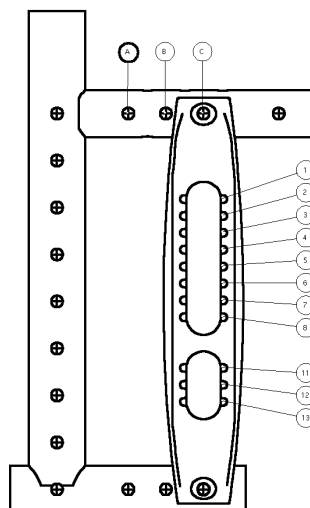


Caster fork, long	Adjustment range in cm
Caster wheel diameter 4"	46 – 48
Caster wheel diameter 5"	46 – 49
Caster wheel diameter 5.5"	47 – 50
Caster wheel diameter 6" pneumatic	47 – 51

#### Seat height table

##### Posterior seat height

Wheel size	Adjustment range in cm
20"	35 – 41 and 43 – 46
22"	38 – 43 and 46 – 48



Frame accessories			
MA 50	<input type="checkbox"/>	Transport wheels	Add. charge
MA 51	<input type="checkbox"/>	Tip-assist, right	Add. charge
MA 52	<input type="checkbox"/>	Tip-assist, left	Add. charge
MA 55	<input type="checkbox"/>	Anti-tipper, right	Add. charge
MA 56	<input type="checkbox"/>	Anti-tipper, left	Add. charge
MA 57	<input type="checkbox"/>	Crutch holder with tip-assist, right	Add. charge
MA 58	<input type="checkbox"/>	Crutch holder with tip-assist, left	Add. charge
The selection of transport wheels excludes the anti-tipper option and vice versa.			

Caster wheels		(dimensions in mm)	
MF 30	<input type="checkbox"/>	4" solid rubber, black	(100 × 32) –
MF 35	<input type="checkbox"/>	4" soft caster, aluminium	(100 × 38) Add. charge
MF 31	<input type="checkbox"/>	5" solid rubber, black	(125 × 32) –
MF 36	<input type="checkbox"/>	5" soft caster, aluminium	(125 × 38) Add. charge
MF 04	<input type="checkbox"/>	5.5" soft caster, grey	(140 × 40) –
MF 32	<input type="checkbox"/>	6" solid rubber, black	(155 × 33) –
MF 37	<input type="checkbox"/>	6" soft caster, aluminium	(150 × 38) Add. charge

Fork length			
MF 80	<input type="checkbox"/>	Caster fork, long	–
MF 81	<input type="checkbox"/>	Caster fork, short	–

Caster wheel accessories			
MF 96	<input type="checkbox"/>	Adapter for low anterior seat height (-3.5 cm)	Add. charge
MF 97	<input type="checkbox"/>	Adapter for high anterior seat height (+3.5 cm)	Add. charge

Posterior seat height in cm (see information on page 2)							
<input type="checkbox"/> 35	<input type="checkbox"/> 36	<input type="checkbox"/> 37	<input type="checkbox"/> 38	<input type="checkbox"/> 39	<input type="checkbox"/> 40	<input type="checkbox"/> 41	<input type="checkbox"/> 42
<input type="checkbox"/> 43	<input type="checkbox"/> 44	<input type="checkbox"/> 45	<input type="checkbox"/> 46	<input type="checkbox"/> 47	<input type="checkbox"/> 48		

Drive wheel size			
MG 04	<input type="checkbox"/>	20"	–
MG 01	<input type="checkbox"/>	22" (from SD 36 cm)	–

Drive wheel camber					Horizontal drive wheel position		
<input type="checkbox"/> 0°	<input type="checkbox"/> 2°	<input type="checkbox"/> 4°	<input type="checkbox"/> 6°*	<input type="checkbox"/> 8°*	<input type="checkbox"/> A	<input type="checkbox"/> B	<input type="checkbox"/> C

\* 0° seat inclination recommended

Drive wheel rim			20"	22"	
MG 05	<input type="checkbox"/>	Standard	•		–
MG 06	<input type="checkbox"/>	Hollow rim		•	–
MG 15	<input type="checkbox"/>	Infinity Ultralight		•	Add. charge
MG 80	<input type="checkbox"/>	Drive wheel with drum brake/attendant		•	Add. charge

Tyres			20"	22"	
MG 31	<input type="checkbox"/>	Schwalbe RightRun/HS 302, fine tread, 1"	•	•	–
MG 35	<input type="checkbox"/>	PU, 1 3/8"	•	•	–
MG 37	<input type="checkbox"/>	Schwalbe Marathon Plus Evolution 1"		•	Add. charge

## Information



MG 86 Wheelbase extension



MD 10 Back support, angle-adjustable



MD 54 Angled push handles



ME 02 Plastic clothing guard



ME 50 Padded arm support



MA 01 Standard front frame



MA 06 Abducted front frame



MG 15 Infinity Ultralight rim



MG 31 Schwalbe RightRun



MB 03 Single-panel foot plate



MB 10 Individual leg supports



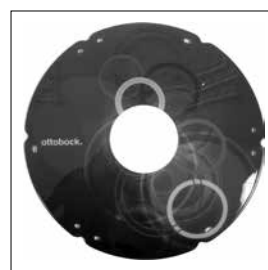
MB 20 Leg support for short lower leg length



MB 73 Lateral heel blocks



MG 100 Graphic



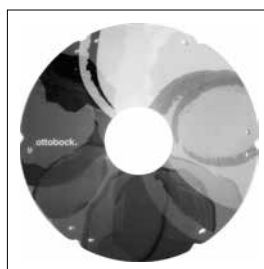
MG 101 Miracle



MG 102 Network



MG 103 Robots



MG 104 Spectrum

Handrims			20"	22"	
MG 50	<input type="checkbox"/>	Aluminium, black coated, high	•	•	–
MG 52	<input type="checkbox"/>	Aluminium, silver anodised, high	•	•	–
MG 53	<input type="checkbox"/>	Aluminium, silver anodised, low		•	Add. charge
MG 54	<input type="checkbox"/>	Rubber-coated, high	•	•	Add. charge
MG 56	<input type="checkbox"/>	Stainless steel, polished, high	•	•	Add. charge
MG 57	<input type="checkbox"/>	Stainless steel, polished, low		•	Add. charge

Handrims mounting			
MG 70	<input type="checkbox"/>	Narrow	–
MG 71	<input type="checkbox"/>	Wide	–

Drive wheel accessories			
MG 86	<input type="checkbox"/>	Wheelbase extension (may affect seat height)	Add. charge
MG 87	<input type="checkbox"/>	High-pressure air pump, 14 bar	Add. charge
MG 88	<input type="checkbox"/>	Airman pump, battery-operated	Add. charge

Back support height in cm (see information on page 2)		
<input type="checkbox"/> 17.5	<input type="checkbox"/> 20	<input type="checkbox"/> 22.5 <input type="checkbox"/> 25 <input type="checkbox"/> 27.5 <input type="checkbox"/> 30 <input type="checkbox"/> 32.5 <input type="checkbox"/> 35 <input type="checkbox"/> 37.5 <input type="checkbox"/> 40

Back support system		Adjustment range in cm			
MD 01	<input type="checkbox"/>	Back support, straight	<input type="checkbox"/> 17.5 – 27.5	<input type="checkbox"/> 25 – 35	<input type="checkbox"/> 30 – 40 –
MD 10	<input type="checkbox"/>	Back support, angle-adjustable*	<input type="checkbox"/> 30 – 40		Add. charge

\*Adjustment range -9° to +9° (in 6° increments)

Back support upholstery			
MD 04	<input type="checkbox"/>	Standard (from BH 30 cm)	–
MD 05	<input type="checkbox"/>	Adaptable	–
MD 06	<input type="checkbox"/>	Without	Price reduction

Back support upholstery with zippered pocket (from SW 26 cm)			
MD 70	<input type="checkbox"/>	Yes	Add. charge
MD 71	<input type="checkbox"/>	No	–

Back support upholstery with spacer fabric			
MD 72	<input type="checkbox"/>	Yes	Add. charge
MD 73	<input type="checkbox"/>	No	–

Push handles		Adjustment range			
MD 50	<input type="checkbox"/>	Short			–
MD 51	<input type="checkbox"/>	Long			–
MD 52	<input type="checkbox"/>	Telescoping, long (only available with straight back support)			Add. charge
MD 53	<input type="checkbox"/>	Telescoping, short (only available with straight back support)			Add. charge
MD 54	<input type="checkbox"/>	Height-adjustable/removable, angled (from BH 25 cm)	<input type="checkbox"/> 14 cm	<input type="checkbox"/> 24 cm	Add. charge
MD 55	<input type="checkbox"/>	Height-adjustable/removable, straight (from BH 25 cm)	<input type="checkbox"/> 14 cm	<input type="checkbox"/> 24 cm	Add. charge

Side panels			
ME 01	<input type="checkbox"/>	Standard, adjustable*	–
ME 02	<input type="checkbox"/>	Plastic clothing guard, adjustable	Add. charge
ME 05	<input type="checkbox"/>	Side panel with arm support, short*, height-adjustable	Add. charge

\*Aluminium side panels

Side panel accessories			
ME 50	<input type="checkbox"/>	Arm support, padded, height-adjustable, swing-away, removable (from BH 30 cm)	Add. charge
ME 60	<input type="checkbox"/>	Tray	Add. charge
Seat upholstery			
MC 13	<input type="checkbox"/>	Upholstery, standard	-
MC 06	<input type="checkbox"/>	Without	Price reduction
Seat cushion			
MC 01	<input type="checkbox"/>	Seat cushion, standard <input type="checkbox"/> 3 cm <input type="checkbox"/> 5 cm	Add. charge
MC 02	<input type="checkbox"/>	Cubic Foam seat cushion (thickness 5 cm)	Add. charge
MC 05	<input type="checkbox"/>	Evolight seat cushion (thickness 6 cm)	Add. charge
Lower leg length in cm (without seat cushion)			
Lower leg length (LL) in cm ..... (available adjustment range 16 – 47 cm)			
Leg support bar options			
MB 40	<input type="checkbox"/>	Short (25 cm – 32 cm)	Add. charge
MB 41	<input type="checkbox"/>	Medium (32 cm – 47 cm)	Add. charge
MB 42	<input type="checkbox"/>	Long (≥ 47 cm)	Add. charge
Leg supports			
MB 01	<input type="checkbox"/>	Single-panel leg support, angle-adjustable, foot plate 12.5 cm deep (from lower leg length 25 cm)	-
MB 03	<input type="checkbox"/>	Single-panel leg support, angle-adjustable, foot plate 16 cm deep (from lower leg length 25 cm)	-
MB 10	<input type="checkbox"/>	Individual leg supports, angle-adjustable, foot plate 16 cm deep (from lower leg length 25 cm)	-
MB 19	<input type="checkbox"/>	Individual leg supports for short lower leg length (16 – 25 cm)	Add. charge
MB 20	<input type="checkbox"/>	Single-panel leg support for short lower leg length (16 – 25 cm)	Add. charge
Leg support accessories			
MB 70	<input type="checkbox"/>	Locking device for single-panel foot plate (prevents accidental flipping up) (only with MB 01 and MB 03)	Add. charge
MB 72	<input type="checkbox"/>	Heel strap for individual leg supports (from lower leg length 36 cm)	Add. charge
MB 73	<input type="checkbox"/>	Adjustable lateral heel blocks	Add. charge
Other accessories			
MZ 50	<input type="checkbox"/>	Lap belt with plastic buckle	Add. charge
MZ 51	<input type="checkbox"/>	Lap belt with metal buckle	Add. charge
MZ 52	<input type="checkbox"/>	Tool kit	Add. charge
Please also use the order form for wheelchair accessories 647F661.			
Head support			
MZ 61	<input type="checkbox"/>	Installation kit for head support, horizontal	Add. charge
MZ 62	<input type="checkbox"/>	Installation kit for head support, horizontal and vertical	Add. charge
MZ 63	<input type="checkbox"/>	Head support cpl. incl. installation kit for head support, horizontal + vertical	Add. charge

Spoke protector			
MG 90	<input type="checkbox"/>	Spoke protector, transparent	Add. charge
MG 100	<input type="checkbox"/>	Spoke protector, Graphic decor	Add. charge
MG 101	<input type="checkbox"/>	Spoke protector, Miracle decor	Add. charge
MG 102	<input type="checkbox"/>	Spoke protector, Network decor	Add. charge
MG 103	<input type="checkbox"/>	Spoke protector, Robots decor	Add. charge
MG 104	<input type="checkbox"/>	Spoke protector, Spectrum decor	Add. charge
Frame colours			
001	<input type="checkbox"/>	Brilliant silver	-
002	<input type="checkbox"/>	Anthracite metallic	-
003	<input type="checkbox"/>	Jet black RAL 9005	-
004	<input type="checkbox"/>	Ice blue	-
005	<input type="checkbox"/>	Sparkle light orange	-
009	<input type="checkbox"/>	Vinho sparkle	-
010	<input type="checkbox"/>	Marine blue	-
012	<input type="checkbox"/>	Sky blue	-
013	<input type="checkbox"/>	Jet black RAL 9005 matte	-
014	<input type="checkbox"/>	Candy red	-
021	<input type="checkbox"/>	Sparkle granny-smith	-
023	<input type="checkbox"/>	White RAL 9016	-
037	<input type="checkbox"/>	Pink	-
032	<input type="checkbox"/>	Pure metal blue	Add. charge
033	<input type="checkbox"/>	Pure metal green	Add. charge
034	<input type="checkbox"/>	Pure metal bronze	Add. charge
035	<input type="checkbox"/>	Pure metal red	Add. charge
Upholstery colours			
901	<input type="checkbox"/>	Black	-
902	<input type="checkbox"/>	Blue	-
903	<input type="checkbox"/>	Red	-
Special accessories			
MZ 93	<input type="checkbox"/>	Wheelchair backpack	Add. charge
MZ 92	<input type="checkbox"/>	Wheel blades (mini-skis for caster wheels)	Add. charge
Special options			
22888.003	<input type="checkbox"/>	Elevating leg supports type LK/RK200	Add. charge