

# ***Nielsen Line*** **Shower/Commode**



## ***Nielsen Line Shower/Commode***



Nielsen Line Shower/commode w/plastic backrest  
Art no.: 313031



Nielsen Line Self-propelled Shower/commode  
w/plastic backrest  
Art no.: 313031+313040+313034



Nielsen Line Shower/commode w/netweave  
backrest  
Art no.: 313030



Nielsen Line Self-propelled Shower/commode  
w/netweave backrest  
Art no.: 313030+313040+313034

## **Nielsen Line Shower/Commode**

Simple design - high quality & comfort.

**Designed in Denmark and produced under danish quality standards.**

Frame in strong aluminum.

Seat in ergonomic design.

Massive telescopic legs providing high stability.

Castors protected against hair and dirt (closed circuit).

Footrests included as standard providing good support.

A wide variety of accessories ensures good adjustment to the individual user.



Nielsen Line shower/commode chairs are available with either a flexible plastic backrest or a netweave backrest.

The plastic backrest gives comfortable support, and is easy and simple to clean / disinfect.



The Netweave backrest can adjust to the users back, so you have a consistent pressure spread over the back.

It provides better support for users with e.g. scoliosis.

# Nielsen Line Shower/Commode

Simple design - high quality & comfort.



As standard, the chair is provided with a seat which has a cut-out in the front which provides good access.

The plastic seat can be removed without tools and is easy to clean.

The seat comes with commode bucket/pan runners. They are designed that the commode bucket/pan is held in place, when moving the chair. It is easy to remove the bucket after use.

The commode bucket/pan runners can be removed without tools if the commode pan is not needed.



Nielsen Line shower/commode chairs come as standard with height adjustable and angle adjustable footrests.

The height and angle is easy to adjust without the use of tools and a bushing in the footrest holder ensures that the footrests are mounted secure.



The height adjustability of the footrest and the angle adjustability of the footplate ensures optimal positioning of your feet.

HMN a/s

## Nielsen Line Shower/Commode

Simple design - high quality & comfort.

In the standard version Nielsen Line shower / commode chairs come with 100 mm castors.

The castors are high quality and in cooperation with the light frame construction it makes the chair extremely easy to move.

The castors are fitted with telescopic legs so the chairs can be adjusted in height.

As an accessory we can provide a 24" wheel kit, so the chair can be rebuilt to a self-propelled chair.

The chair can also be delivered with 125mm wheels.



125 mm wheels mounted instead of 100 mm wheels.  
Art. no.: 313048



The armrest is provided with a TPE coating on the surface. The TPE is comfortable to rest your arms on, as it is hygienic and nonslip.

The armrest can be removed easily by swinging it to a 45° angle and removing it sideways.



This provides optimal accessibility by sideways transfers.

## ***Nielsen Line Self-propelled***

When the user want's to be independent.



24" Rear Wheelset for mounting on Nielsen Line standard.  
Art. no.: 313040+313034



Supplements for magnesium wheels, mounted  
Art. no.: 313044+313034

On Nielsen Line shower / commode chairs its possible to mount 24" wheels. This enables the user to become Self-reliant and handle showering and toilet by themselves.

The chair is height adjustable in two different heights:  
Seat height: 53,5 cm and 59,5 cm.

If needed the chair can be delivered without driving handles.  
This makes the chair 5 cm narrower. (width: 62 cm).

The rear wheels are standard made of plastic.  
You can also choose to have magnesium wheels instead.  
They are more stable and gives a more attractive look.

## *Nielsen Line Self-propelled*

When the user want's to be independent.



As standard the chair is fitted with two anti-tip bars for safety.

This prevents the chair from tilting backwards, even if the user pushes hard backwards or accelerates very fast.



The self-propelling wheels have quick release axles so they are easy to remove for cleaning and height adjustment.

The quick release axles and the bearings are made of stainless steel.



The chair has a handbrake in aluminum.

The brake is continuously variable and can be adjusted to fit the need of the individual user regarding braking power and tightness.



## ***Nielsen Line Accessories***

---

### **Soft seat**

If the user has a need for additional comfort we offer a soft seat in PU foam.

The design is adjusted precisely to the seat, so it just can be fitted on top of the seat.

This seems also more warmly for the user and provides a better experience of sitting on a shower / commode chair.



Soft seat in PU foam  
Art. no.: 313043

---

### **Cover**

If the chair is only used in bathing situations, it may be perceived unnatural to sit on a "toilet seat"

The cover for Nielsen Line chair covers the entire seat, and is made of soft PU foam.



Cover in PU foam  
Art. no.: 313042



## **Nielsen Line Accessories**

---



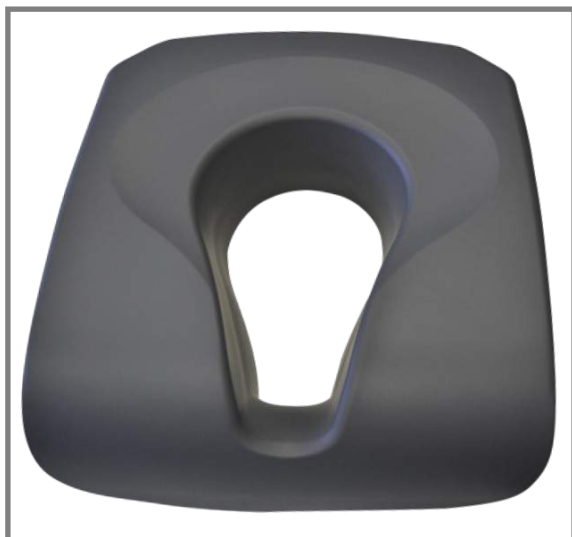
Supersoft foam cushion  
Without hole Art. no.: 330022

### **Supersoft foam cushion**

This incredibly soft foam cushion is easily placed on top of the original seat and fastened to the frame with four strings.

The material is water resistant foam, and since it is not covered, there are no edges that can irritate the skin.

The cushion is delivered without aperture so you can adjust the aperture as needed.



Pressure-relief Seat  
Vare nr.: 330023

### **Pressure-relief Seat**

The Pressure-relief Seat is designed to reduce pressure / shear and thereby preventing pressure ulcers.

The seat can prevent and treat pressure ulcers up to grade 3.

The anatomical shape of the seat surface and material permissiveness ensure the user's stability in the sitting position.

# Nielsen Line Accessories

## Calf support

The calf support is especially recommended when you have a risk that the legs of the user will slide backwards.

The calf support is made with velcro which makes it depth adjustable. It supports the entire lower leg which provides safety for the user.



Calf support  
Art. no.: 310226

## Footrests with heel straps

Height adjustable footrests with heel straps that prevent the user's feet from sliding backwards when tilting the chair.

With heel straps the footrests can still be pushed aside.



Footrest with heel straps  
Art. no.: 310285

## Height adjustable footrests

If needed, we can offer different footrests than the standard.

We can offer both shorter and longer footrests.

The shorter ones (31-41 cm from seat to footplate).

Extended (49-61 cm),

And a reinforced one in standard length.



Footrests:  
short: art. no. 310510  
extended: art. no. 310283  
Reinforced: art. no. 310275

## Nielsen Line Accessories



Legrests with elevation, set, art. no.: 310052  
Legrest with elevation, right, art. no.: 310053  
Legrest with elevation, left, art. no.: 310054



Footrest plate:  
Right, Art. no.: 310085  
Left, Art. no.: 310086  
Extra calfrest in PU foam Art. no.: 310358

### Legrest with elevation

If you need more support, we offer legrests with elevation.

With these, you can adjust the angle and the position of the calf rest to achieve optimal support.



Amputation support:  
Amputation support, right, Art. no.: 800343  
Amputation support, left, Art. no.: 310870

### Amputation supports

The amputation supports are easy to adjust by pressing a button and setting the desired angle.

They can be combined with all of our other legrests and supports.

## Nielsen Line Accessories

### Bucket with lid, intimate

The intimate bucket offers both an ergonomic grip.

The size and shape makes sure that the user will not hit the sides.

The bucket is designed for our seats and has a perfect fit.

Possibility of cleaning up to 135°.



Bucket with lid, intimate  
Art. no.: 310048

### Direction Fixed castor

The chair can be supplied with a direction fixed castor (dark gray brake pedal).

This facilitates maneuvering, and initiation of the chair and ensures that carers health and safety are protected.

It is also possible to get a direction fixed castor to an existing wheel chair as an accessories.



Surcharge for the chair delivered with 1  
direction fixed wheel:  
Art. no.: 800157

Accessory for existing chair:  
Direction Fixed castor, Art. No. : 800541

### 125 mm wheels

The wheels are of high quality and along with the chair construction makes the chair incredibly smooth running.

The wheels are mounted on telescopic legs so the chairs can be adjusted in height.



125 mm Wheels for Nielsen Line  
Vare nr.: 800538

## Nielsen Line Accessories



Urine funnel  
Art. no.: 148861

### Urin funnel

The urin funnel is made for people who have problems urinating into the toilet. It can help preventing the user from urinating on the floor or on the toilet seat.

The urin funnel is used by placing the narrow end facing down towards the toilet.



Nielsen Line Splash guard  
Art. no.: 313047

### Splash Guard

The splash guard is for people having trouble getting "the beam" directed down in the toilet / bucket.

It can alleviate the problem by spreading the legs to facilitate the possibility of lower hygiene.

The splash guard is mounted on the seat.



Soft backrest  
Vare nr.: 313045

### Soft backrest

The soft backrest is made of a stretchable leather.

The stretchable material allows it to mold to the user's back.

## Nielsen Line Accessories

### Hipbelt

For extra safety there can be mounted a hipbelt.

We offers two different hipbelts:

For additional security, you can install a hipbelt.

Hipbelt with velcro  
Hipbelt with click buckle.

They are both suitable for users who either need more security, or for users that slides forward in the chair.

Both can be fitted around a pipe, while the hipbelt with click buckle can also be mounted on the armrest holders.

To prevent the user from being bothered by the click buckle it is fitted with a neoprene piece.



Hipbelt with velcro  
Art. no.: 330019



Hipbelt with click buckle  
Art. no.: 800404

### Crossbar

This cross bar is mounted easily and securely with rubber straps onto the armrests.

It provides good support and extra security for the user.



Crossbar  
Art. no.: 310228

## Technical data

	Nielsen Line Shower/commode, standard	Nielsen Line Shower/commode Self-propelled
Seat height	Ca. 44,5—46,5—48,5—50,5—52,5—54,5—56,5 cm (+ 2,5 cm with 125 mm. wheels)	53—59 cm
Seat width	48,5 cm	
Seat depth	45 cm	
Max. height	93—105 cm	101,5—107,5 cm
Max. Width	58 cm (Ved armlæn)	67 cm (With belts on wheels) 62 cm (Without belts on wheels)
Space between the armrests	47,5 cm	
Clearance under the seat With bucketholder / Without bucketholder	36,5—48,5 cm / 40,5—52,5 cm	45—51 cm / 49—55 cm
Length (without the footrests)	60 cm	75 cm
Weight (incl. Footrests) With plastic backrest / With net- weave backrest	11,0 kg (12,6 kg) / 10,6 kg (12,2 kg)	17,0 kg (18,6 kg) / 16,6 kg (18,2 kg)
Max. Load	150 kg	
Wheels	100 mm wheels w / gray rubber and ball bearings and double-acting brakes.	Frontwheels: 125 mm wheels w / gray rubber and ball bearings and double-acting brakes. Backwheels (rear wheels): 24" plasticwheel with massive PUR wheel
Height adjustable	7 seat heights can be adjusted with clips. (Without tools)	2 heightadjustments. Rearwheels by using a wrench Brakes by using an allen Frontwheels and anti-tip security using clips (no tools)
Backrest	Plastic backrest (art. 313031) or netweave (art. 313030)	Plastic backrest (art. 313031) or netweave (art. 313030)
Surface/Metal	Aluminium steel. Powdercoated.	
Art. No. Plastic backrest / Netweave backrest	313031 / 313030	Self-propelled chair with plastic back: 313031+313040+313034 Self-propelled chair with netweave back: 313030+313040+313034 Supplements for magnesium wheels Art. no.: 313044
ISO-nummer	09 12 03	





**HMN** since 1934

Midtager 22 - 2605 - Brøndby - Danmark  
Tlf.: +45 4396 2400 - E-mail: [info@hmn.dk](mailto:info@hmn.dk) - Web: [www.hmn.dk](http://www.hmn.dk)

**HMN a/s**